

CR-6 系列刷固件说明

Upgrade Guide for CR-6 Series Printer

主板版本号: **Creality V4.5.2** Mainboard Version: **Creality V4.5.2**

刷新主板固件: **Update Mainboard firmware:**

1、将存储卡在电脑端进行格式化(一般 8G 的卡为宜); Format the SD card on the computer (Recommend 8G SD card)

2、将机器对应的固件复制到存储卡, 注意此时存储卡中仅保存这一个 bin 文件;

Copy the firmware into the SD card, and please note there should be only one bin file

(文件后缀为.bin  `firmware-2.0.0-1.0.0-17.bin`) File ending with. bin

3、关闭机器电源, 将带有 bin 文件的存储卡插入机器卡槽; Power off the printer, and insert the SD card with bin file into the printer card slot.



4、接入电源并开机, 等待 10 秒左右, 固件会自动完成刷新; Plug in the power cord and power on, wait about 10 seconds, the firmware will complete updating automatically.



5、固件更新完成，拔掉存储卡，删掉里面固件文件即可。

Firmware update finished, Please unplug the SD card and delete the firmware file.

注意事项: Notes:

若固件烧录失败，会一直停留在进度条页面，此时请按如下步骤进行：

If firmware update failed, it will always stay in process bar interface, on which please operate as following steps.

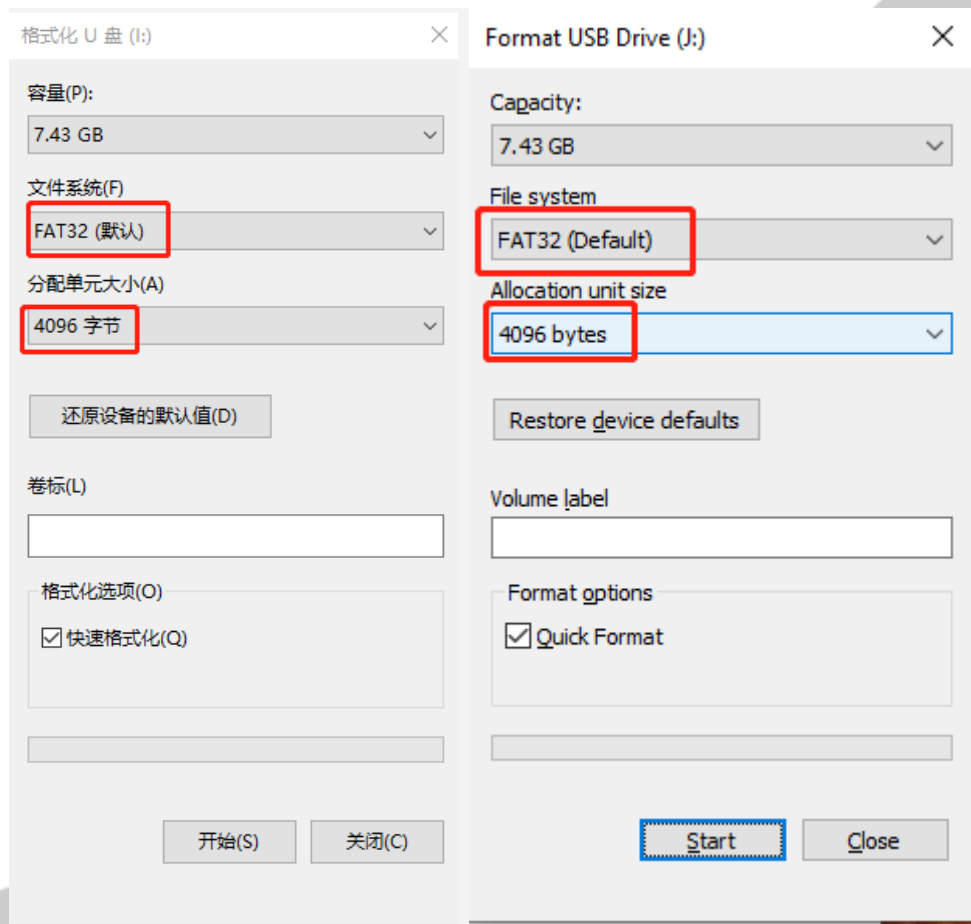
- 1、检查固件名称，不能包含中文字符及其他特殊字符，否则将可能导致固件无法刷录。固件名称建议仅包含英文数字字符，如 “CR-6SE - V2.0.1.3 - HW - V4.5.2”。

Check the firmware name, which can not contain Chinese characters or other special characters, otherwise it will lead the firmware update failed. The firmware name is recommended to contain only English characters and numbers, such as “CR-6SE - V2.0.1.3 - HW - V4.5.2”。

- 2、右键点击 U 盘，选择格式化，弹出格式化窗口，文件系统选择 FAT32，分配

单元大小选择 4096 字节，如下图所示：

Right click the U disk, select format, and then format window pop up, select FAT32 under File system and 4096 bytes under allocation unit size, as figure shown below:



刷新屏幕固件：Update the screen firmware:

1、将存储卡在电脑端进行格式化（一般 8G 的卡为宜）；

Format the SD card on the computer (Recommend 8G SD card)

2、将屏幕固件复制到存储卡，注意此时存储卡中仅保存这一个文件，打印机处于关机状态；（文件夹名称为 DWIN_SET  DWIN_SET ）

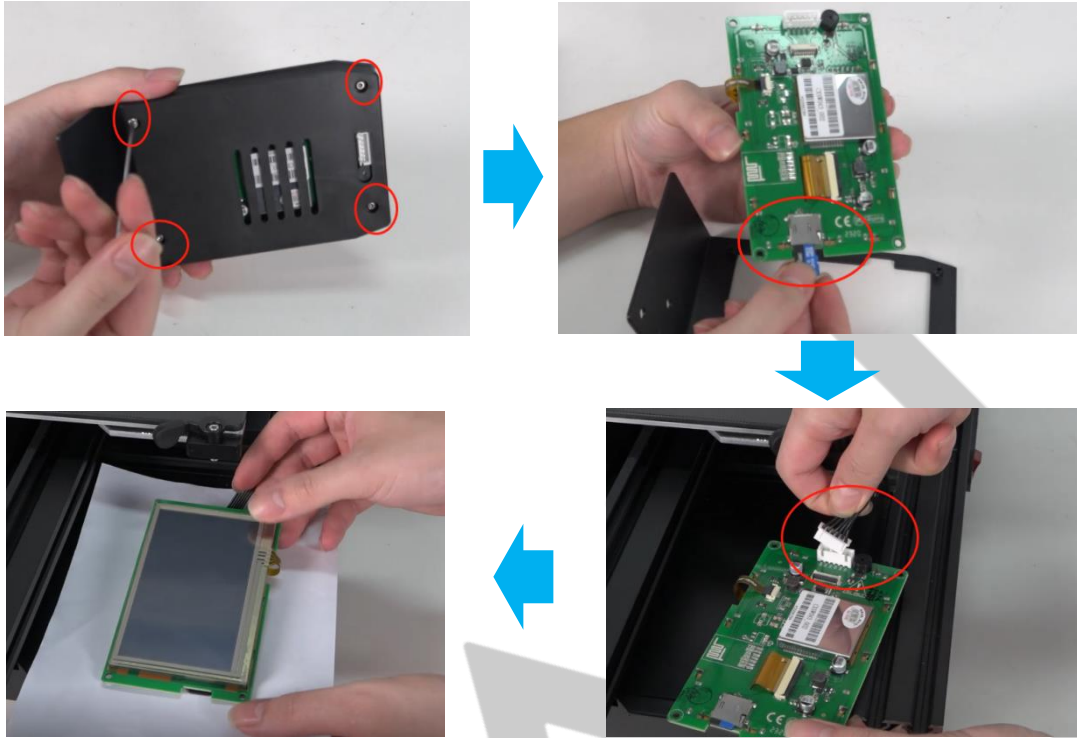
Copy the screen firmware into the TF card, and please note this should be the only file in the TF card, and the printer should have been shut down. File Folder is DWIN_SET

3、先将屏幕拆下，再将屏幕背部的接线拔掉；Remove the screen and unplug the wiring on the back of the screen.



4、再将屏幕底盖拆掉，将存有固件的存储卡插入屏幕的卡槽内，插好屏幕接线，然后将屏幕正面放置（可在屏幕底部放入纸张/绝缘物体，避免屏幕板上的金属件接触到其他金属物质而短路）；

Then remove the bottom cover of the screen, insert the memory card with firmware into the screen card slot, plug in the screen wiring, and then place the screen in the front (paper or insulating objects can be placed at the bottom of the screen to avoid short circuit caused by metal parts on the screen board contacting with other metal substances)



5、接入机器电源并开机，等待屏幕自动刷新固件，一般等待时间约 1 分钟左右，当屏幕右上角出现“END”的字样的时候，表示固件刷新完成，这时关闭机器电源，拔出 SD 卡，重新将屏幕安装好即可；

Plug in power cord and power on, wait the screen update the firmware automatically, wait about 1 minutes, and when “END” appears on the top right corner means the firmware update finished. At this time, power off the printer, unplug the SD card and install the screen again.



注意事项:

如屏幕第一行后面提示“END”，但下方的烧录数字显示为零，则表示更新不成功，需要格式化 SD 卡后重新执行屏幕固件更新操作。

IF "End" is prompted at the end of the first line, while the numbers of below are all 000, which means the updating is failed, needing to format the SD card and re-operate screen firmware update steps.



图 显示屏更新固件失败显示状态

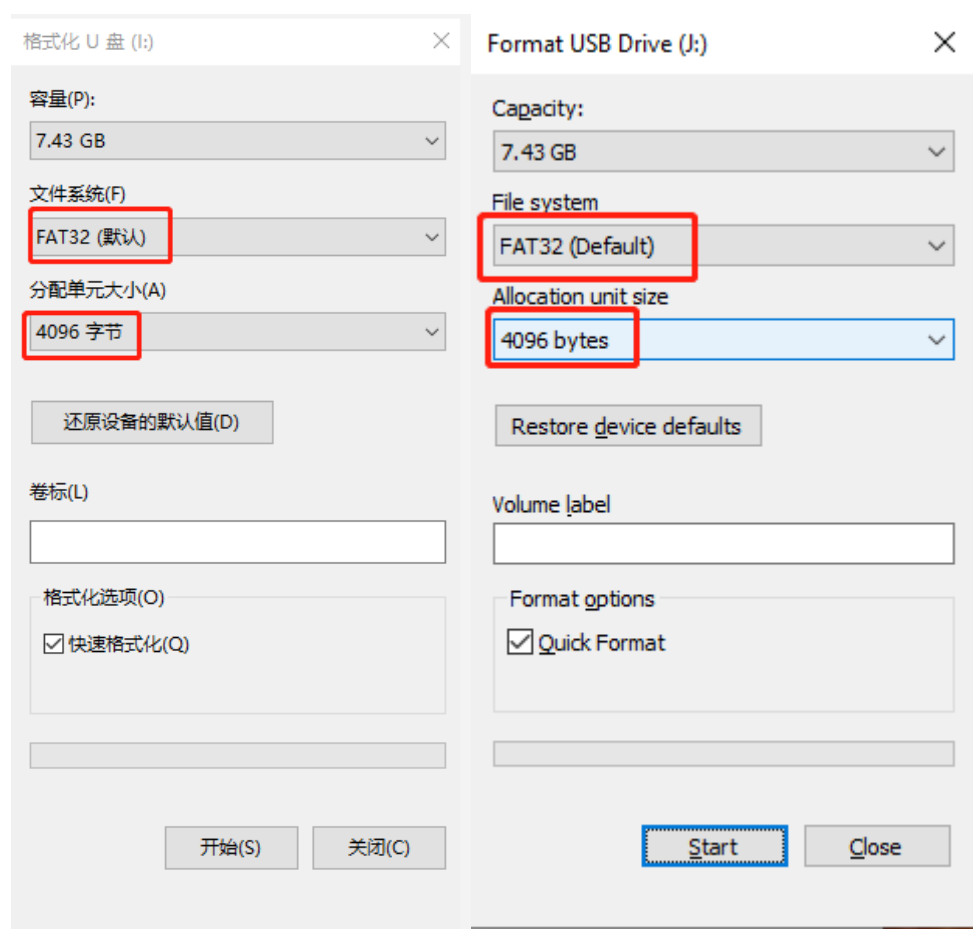
屏幕固件如烧录不成功，请如下步骤格式化 SD 卡重试：

If Screen firmware update fail, please format the SD card as below:

- 1、右键点击 U 盘； 1. Right click the U disk.
- 2、弹出格式化窗口； 2. Format windows pop up.

文件系统选择 FAT32，分配单元大小选择 4096 字节，如下图所示： Select FAT32 under system file and and 4096 bytes under allocation unit size, as figure shown below:

3、



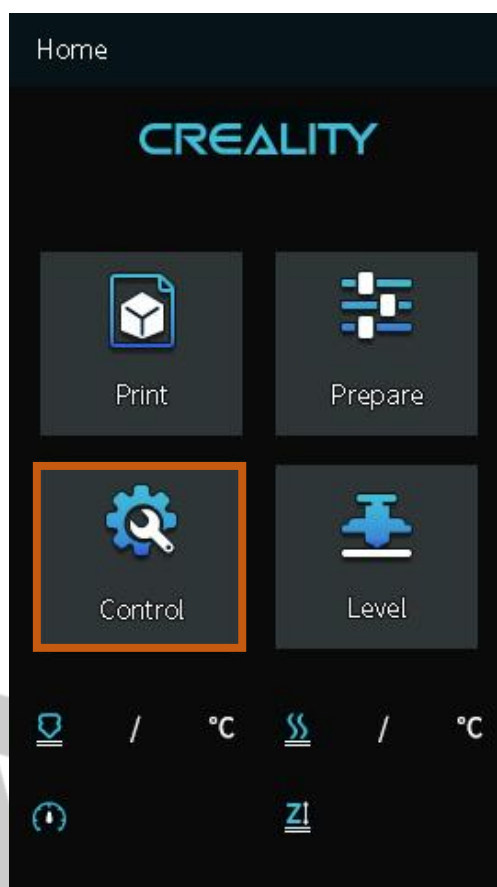
重复刷新屏幕固件步骤；

Repeat the steps to refresh the screen firmware

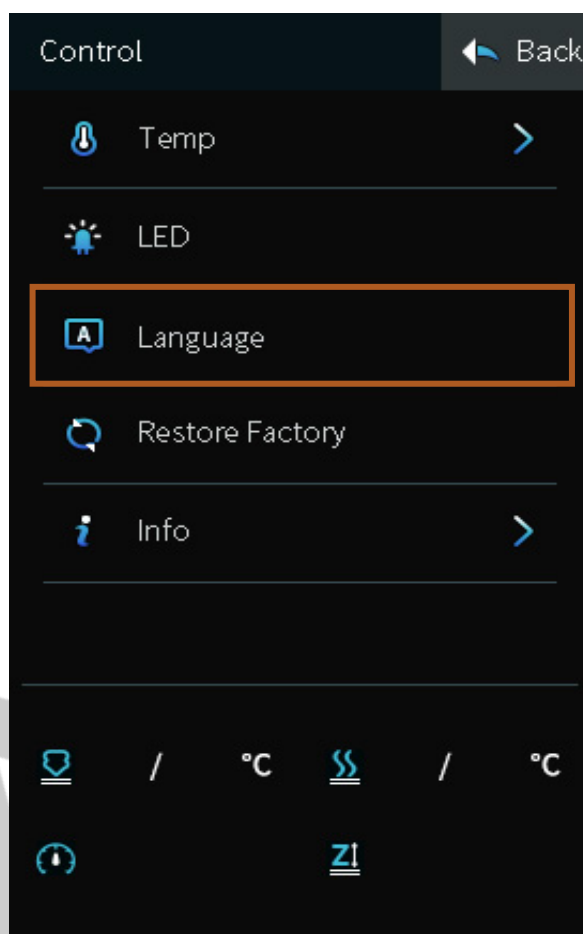
语言切换 Language Switch

开机正常进入系统后,在首页点击“设置”

After entering the system normally, click "Control" on the home page



在控制页点击“语言选择”。
Click "language" on the control page.



在语言选择页选择对应的语言。

Select the user language on the language selection page.

