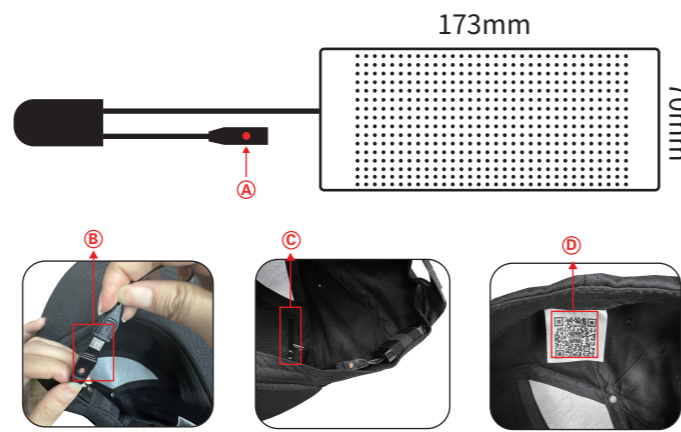


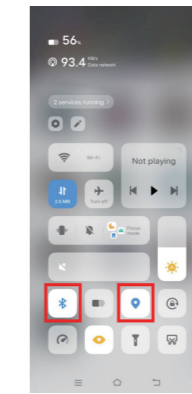


### 1.Function introduction



- Battery type: 602040 lithium battery
- Battery capacity: 450mAh
- Battery charging: charging for 1 hour.
- Battery discharge: discharge for 3-4 hours.
- Voltage and current: 5V/2A
- Lamp bead color: RGB

### 2.Firstly, Please turn on Bluetooth and Location

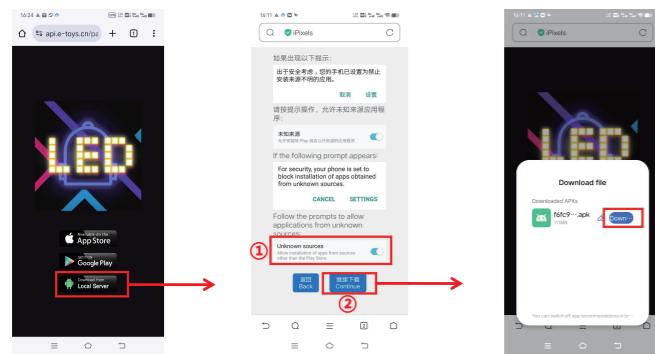


Scan the QR code below to download and install app with your mobile phone, or enter Google Play/APP Store and search for "iPixel Color" to download

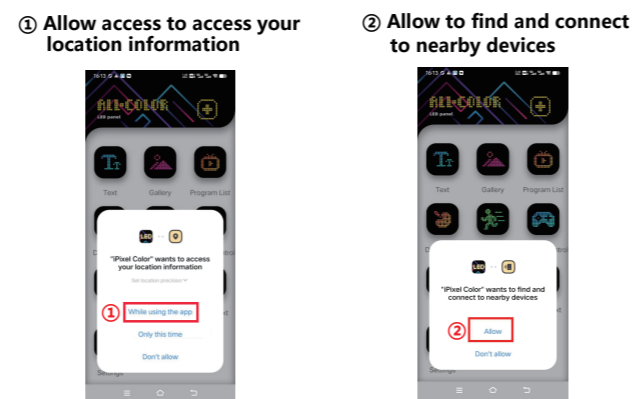


Scan the QR code and download the APP

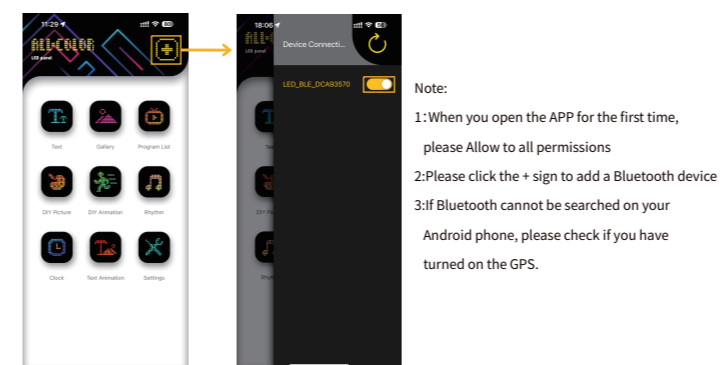
### 3.If you don't have APP Store/Google Play, please click the third one to download from Local Server



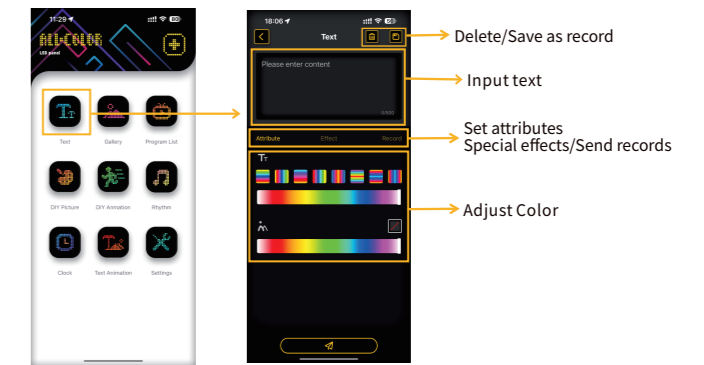
### 4.APP Authorization Permission



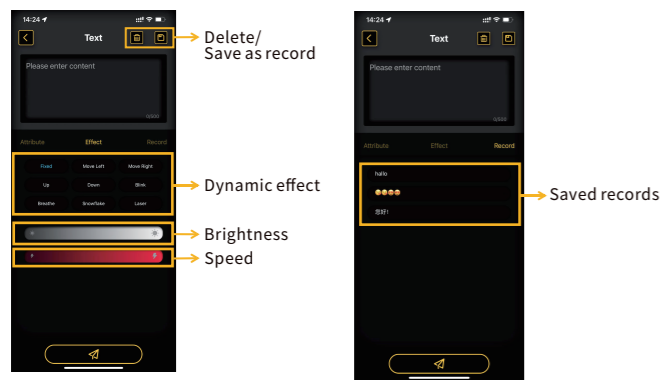
### 5.Connect the device



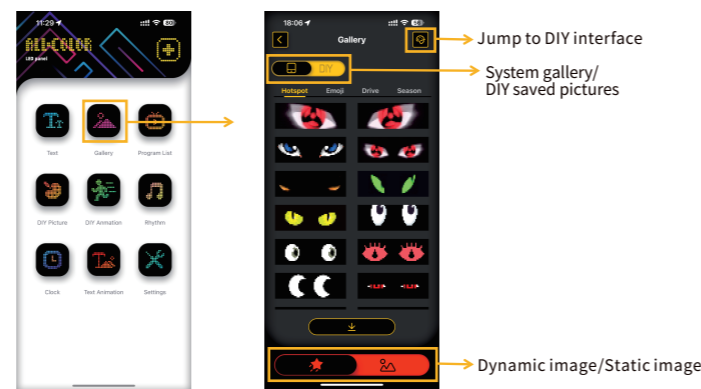
### 6.Text editing



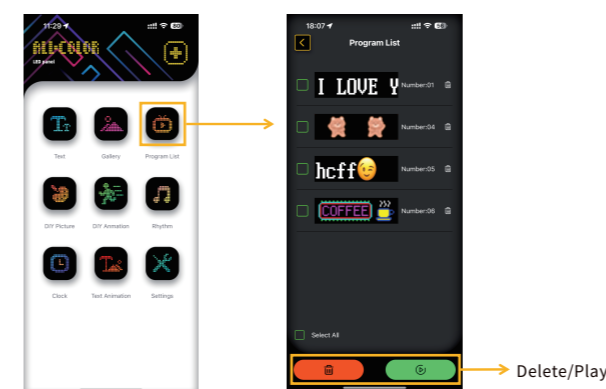
### 7.Special effects/Recording



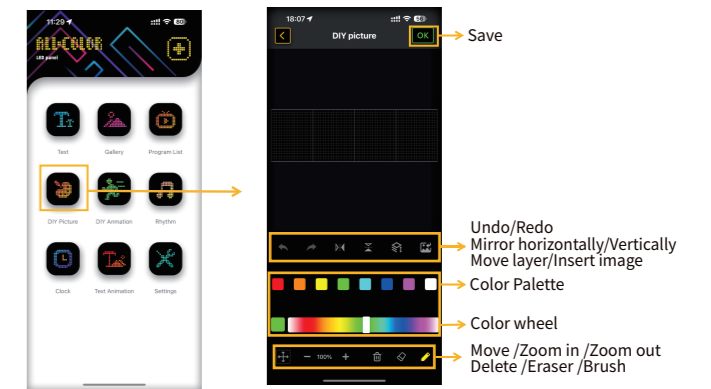
### 8.Gallery



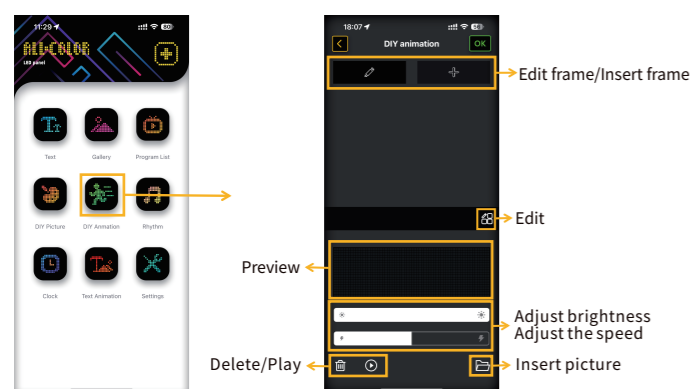
### 9.Program list



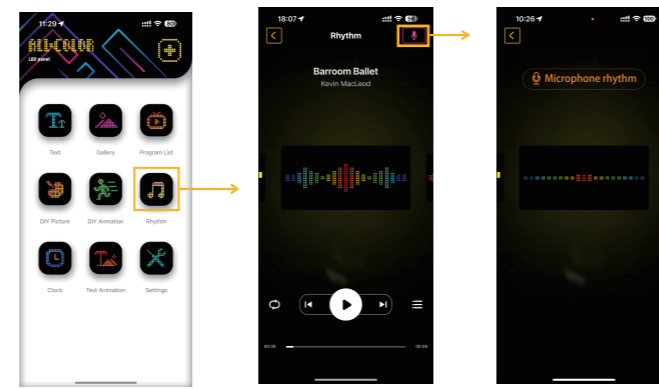
### 10.DIY picture



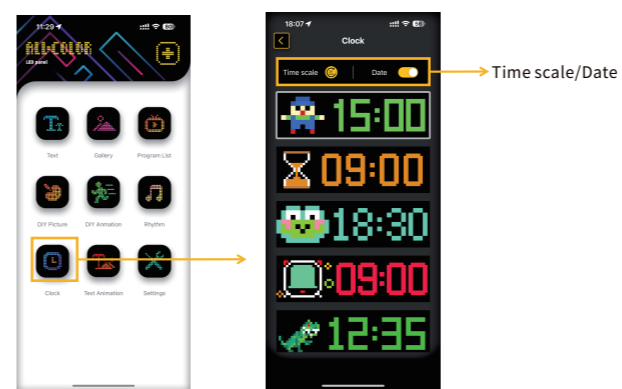
### 11.DIY animation



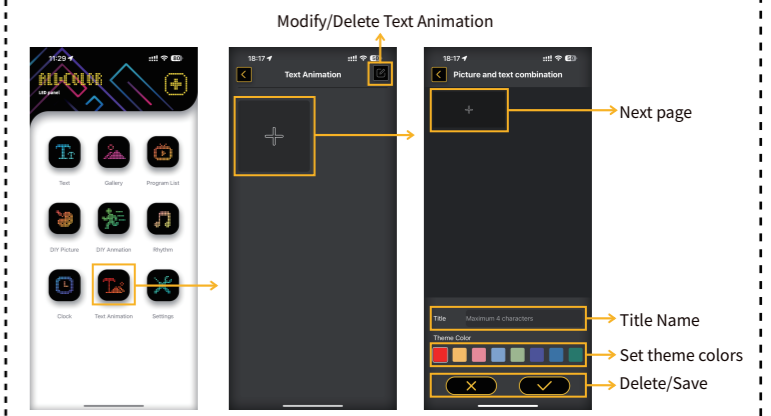
### 12.Rhythm



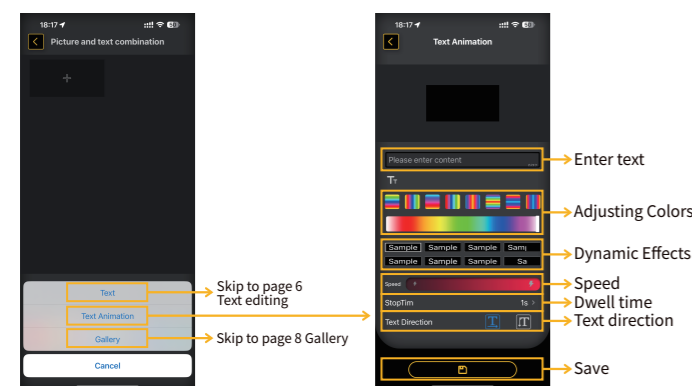
### 13.Clock



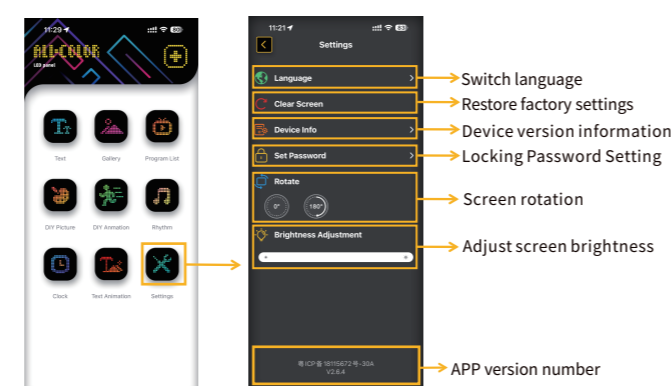
### 14.Text animation



### 15.Text animation



### 16.Settings



Warning:

This device complies with Part 15 of the FCC Rules. Operation is subject to the following two conditions:

- (1) this device may not cause harmful interference, and
- (2) this device must accept any interference received, including interference that may cause undesired operation.

Changes or modifications not expressly approved by the party responsible for compliance could void the user's authority to operate the equipment.

NOTE: This equipment has been tested and found to comply with the limits for a Class B digital device, pursuant to Part 15 of the FCC Rules. These limits are designed to provide reasonable protection against harmful interference in a residential installation. This equipment generates, uses and can radiate radio frequency energy and, if not installed and used in accordance with the instructions, may cause harmful interference to radio communications. However, there is no guarantee that interference will not occur in a particular installation. If this equipment does cause harmful interference to radio or television reception which can be determined by turning the equipment off and on, the user is encouraged to try to correct the interference by one or more of the following measures:

- Reorient or relocate the receiving antenna.
- Increase the separation between the equipment and receiver
- Connect the equipment into an outlet on a circuit different from that to which the receiver is connected.
- Consult the dealer or an experienced radio/TV technician for help

NOTE: This device and its antenna(s) must not be co-located or operation in conjunction with any other antenna or transmitter

RF Exposure Statement

To maintain compliance with FCC's RF Exposure guidelines, this equipment should be installed and operated with minimum distance of 20cm the radiator your body. This device and its antenna(s) must not be co-located or operation in conjunction with any other antenna or transmitter.

Lithium Battery Product Usage Notice

Correct Charging

Please use the original charger that comes with the product. Avoid using incompatible charging devices to prevent overcharging, short circuits, or other safety issues. When charging, ensure the device is in a well-ventilated area, and avoid charging in high-temperature or humid environments.

Avoid Deep Discharge

The lifespan of lithium batteries is related to charging and discharging cycles. Please avoid completely draining the battery before charging. It is recommended to recharge the battery when the power level drops below 20%, as deep discharge may damage the battery.

Temperature Control

Lithium batteries should be used and stored within the temperature range of 0°C to 45°C. Extreme temperatures can damage the battery and may even lead to fire or explosion.

Prevent Dropping and Impact

Lithium batteries are very sensitive to shocks. Please avoid subjecting the device to heavy vibration or falls, as this could cause internal short circuits or leakage, leading to safety risks. Avoid contact with flammable objects.

Do not allow the positive and negative terminals of the battery to come into contact with metal objects such as keys or coins, as this can cause short circuits, overheating, leakage, or even fire.

Do Not Disassemble, Modify, or Expose the Battery

The battery contains flammable and hazardous materials. Disassembling, modifying, or exposing the battery can damage its structure and lead to dangerous situations. Please do not disassemble the battery by yourself.

Battery Aging and Disposal

Over time, lithium batteries will naturally degrade, reducing their capacity and battery life. If the battery becomes swollen, leaks, or overheats, stop using it immediately and dispose of it in accordance with local environmental regulations.

Storage Instructions

If the device will not be used for an extended period, store the battery in a dry, cool place and periodically check the battery's charge level. Avoid leaving the battery in a state of either very low or very high charge for long periods.

Avoid Water Exposure

Do not submerge lithium batteries in water or expose them to humid environments. If the battery comes into contact with water, stop using it immediately and have it professionally inspected. Do Not Leave Unattended While Charging

During charging, especially at night, ensure the battery is monitored in case of any abnormalities.

Friendly Reminder: For your safety, please only use the original or certified batteries and chargers. If any issues with the battery arise, please contact a professional or the manufacturer for inspection and handling.



**PRODUCT INFORMATION**

**Product Model:** MasterA60201  
**Product Name:** 40W Full-Color Pad  
**Number of LEDs:** 112 PCS  
**Screen Size:** 15.6" Diagonal  
**Current and Voltage:** 30V/2A  
**Charging Time:** 3 hours  
**Battery Life:** 10 hours  
**Battery Capacity:** 4500mAh  
**Product Weight:** 1.5kg

**Lithium Battery Usage Disclaimer**

By using this device, you acknowledge and agree to the following terms regarding the use of lithium batteries:  
**Risk of Damage or Injury:** Lithium batteries can be hazardous if mishandled, improperly charged, or exposed to extreme conditions. The manufacturer and seller are not liable for any damage, injury, or loss arising from the improper use, storage, or handling of lithium batteries.

**Compliance with Safety Guidelines:** It is your responsibility to follow all safety instructions provided in the user manual for proper use, charging, storage, and disposal of the lithium battery. Failure to do so may result in battery damage, overheating, leakage, or fire.

**No Warranty for Damages from Improper Use:** The manufacturer does not provide a warranty for damage or malfunction caused by the improper use of the lithium battery. This includes but is not limited to excessive charging, deep discharging, exposure to extreme temperatures, physical damage, or use of non-approved chargers.

**Battery Disposal:** Lithium batteries must be disposed of in accordance with local environmental regulations. Do not dispose of lithium batteries in regular household waste, as improper disposal may cause environmental harm or safety hazards. The manufacturer is not responsible for any consequences arising from improper battery disposal.

**Battery Lifespan:** The performance and lifespan of lithium batteries may degrade over time, especially with frequent use. The manufacturer does not guarantee the longevity or capacity of the battery beyond normal wear and tear. If the battery exhibits signs of swelling, leakage, or failure, it should be replaced immediately.

**Liability Limitation:** The manufacturer and seller are not liable for any direct, indirect, incidental, or consequential damages, including but not limited to data loss, personal injury, or property damage, resulting from the use or misuse of the lithium battery.

**User Responsibility:** By using the lithium battery, you assume full responsibility for the safe operation and maintenance of the device. The manufacturer is not responsible for any injury, loss, or damage caused by improper handling, charging, storage, or disposal of the battery.

**Exemption of Responsibility:** The manufacturer and seller expressly disclaim any liability for damages resulting from the use of non-original, third-party, or incompatible batteries and chargers.

**Important Note:** You are responsible for monitoring the condition of the battery and taking appropriate action if any abnormalities such as overheating, leakage, or physical damage are observed. Always follow the manufacturer's guidelines and local laws to ensure safe usage.