

GACIRON®

Nocturnal Animal

KiWi-800

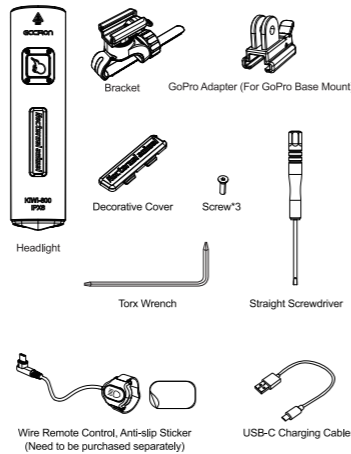
Anti-Glare Bike Front Light

User Manual

## WARNING

- \*Please charge the product at the environmental temperature from 5 to 40 degrees Celsius;
- \*Please check whether the charging cable is good before charging;
- \*When charging, please use the 5V USB power adapter;
- \* Please pull the charging plug out after charging;
- \*Please do not charge, discharge or store in the hot environment, otherwise it will accelerate the aging of the battery; Please store the fully charged headlights in a cool and dry place;
- \*After the correct charge, if the battery usage time is shorter and shorter, it means that the rechargeable battery has reached the effective service life. Please replace the battery at the local maintenance point and properly dispose of the waste rechargeable battery according to local regulations;
- \* This product should be charged once every 3 months without use, so as not to cause damage to the battery and resulting in unusable condition;
- \*Please do not stare at the light when it is just turned on to avoid damaging the eyesight.
- \*After the light is used for long time, please do not touch the light to avoid getting scald.
- \* Children are forbidden to use without adults' supervision.

## 1. PACKAGE LIST

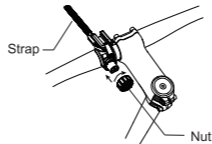


## 2. INSTALLATION

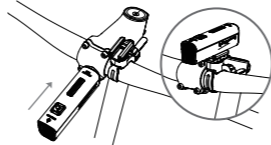
**Two Ways of Installation :**  
On Top and Underneath the Handlebar

### TOP INSTALLATION

① Mount the bracket to the handlebar as below picture, and tighten the nut.



② Slide the bottom of the light into the slot of the bracket. When you hear a "click" sound, the installation is completed.



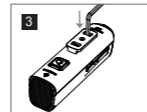
### UNDERNEATH INSTALLATION



Lever the decorative cover open with the straight screwdriver



Unscrew the base of the back with torx wrench



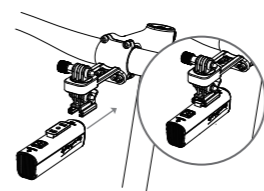
Screw the base on the top position of the original decorative cover with the torx wrench and tighten the screw



Insert the decorative cover to the original bottom position of the base

**Note:** Do not use a torque wrench to tighten the screw.

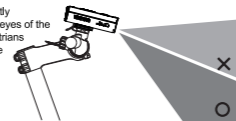
Insert the front light into the multi-functional mount (need to be purchased separately). When you hear a "click" sound, the installation is completed.



### ① Headlight Angle Adjustment

Loosen the nut and adjust the headlight irradiation angle, then tighten the nut. The angle of the headlight can be adjusted according to the actual use, and the adjustable angle of the bracket is 360°.

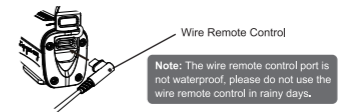
**Note:** Avoid directly illuminating to the eyes of the drivers and pedestrians when adjusting the angle of the light.



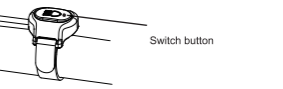
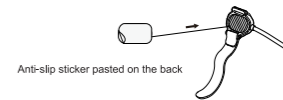
## 3. INSTALLATION OF REMOTE CONTROL

Wire remote control is supported, which needs to be purchased separately.

Paste the anti-slip sticker on the back of the switch of the wire remote control. Open the rubber plug at the rear of the light and insert the remote control into the light in place. Tie the remote control firmly to the handlebar on appropriate position. (The function of the wire remote is the same with the power button of the light.)



**Note:** The wire remote control port is not waterproof, please do not use the wire remote control in rainy days.



## Warranty Certificate

User's Information (Filled In By User)

Name: \_\_\_\_\_ Phone: \_\_\_\_\_

Zip Code: \_\_\_\_\_

Address: \_\_\_\_\_

Purchase Date: \_\_\_\_\_ Year \_\_\_\_\_ Month \_\_\_\_\_ Day

The Following Are Filled In By The Consignee:

Sales Information: \_\_\_\_\_

Sales Company (Stamped With Company Seal)

Phone: \_\_\_\_\_

Address: \_\_\_\_\_

Nearby Service Guidance (Customer First Contact Point)

Service Unit: \_\_\_\_\_

Phone: \_\_\_\_\_

Address: \_\_\_\_\_

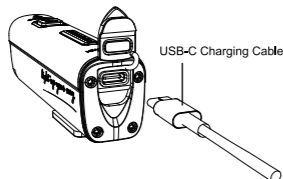
## Warranty Card

- Please contact the wholesaler for customer service. For inherent problems under correct use, we accept a return during seven days since purchase. Users are allowed to replace a new product of the same model for free during fifteen days since purchase, and package is excluded in the replacement.
- Purchase date is defined in accordance with the invoice or receipt made by wholesaler.
- Under the following circumstances, replacement and warranty are both invalidated, but we offer a paid repair service.
  - (1) All damages caused by subjective factors, such as using under abnormal conditions or against the user manual.
  - (2) User's independent repairing and modifying or other unauthorized maintenance.
  - (3) Damages caused by improper shipping
- We offer replacement/maintenance service by presenting this card, please show your invoice or receipt when the service is needed.
- Gaciron is irresponsible for any damages caused by the following improper uses.
  - (1) Hidden safety hazards or incidents caused by user's improper operation.
  - (2) Hidden safety hazards or accidents caused by irresistible factors.
  - (3) Damages or accidents or injuries caused by user's independent operation against the manual or using other materials or accessories on the product which causes malfunction.
- Wherever you purchase this product, you have the total access to equivalent services from the nearest customer service center; if the problem is not solved to your satisfaction, please make a phone call to us or email to our customer service department.
- The company reserves all the right to modify and explain the above terms.

## 4. CHARGING

Open the rubber plug at the rear of the light, insert the USB-C charging cable into the port and connect to the charging device. Red light indicator flashes when charging. Blue light indicator is on when fully charged.

**Note:** While Charging, the light can only operate in low brightness mode.



## 5. OPERATION AND FUNCTION

① **Turn ON/OFF:** Long press power button for 0.75 seconds.



Working Mode	Running Time
High Steady 800 lm	≈2hrs
Medium Steady 400 lm	≈3.5hrs
Low Steady 200 lm	≈6hrs
Breathe 100-50 lm	≈15hrs
Daytime Flash 400 lm	≈24hrs

② **Switch Modes:** When the light is turned on, short press the power button to cycle through the steady modes of Low Steady - Medium Steady - High Steady - Cycle.

③ **Flash Mode:** Under any working mode, long press 2 seconds to enter or exit the flash mode. After entering the flash mode, short press to cycle through the modes of Breathe - Daytime Flash - Cycle.

④ **Fast Switch to High Steady Mode:** Under any working mode except high steady mode, double press the power button within 0.4 seconds to enter the high steady mode directly and single press to return to the memorized mode.

⑤ **Battery Indicator:** When the light is turned off, short press the power button, it will light up for 5 seconds before it lights off.

Remaining Battery	Indicator Color
100%-61%	Blue
60%-21%	Yellow
20%-1%	Red Flash

⑥ **Low power mode:** When the battery power is less than 10%, it will automatically switch to the breathe mode, and it will be locked in breathe mode and unable to switch modes.

⑦ **Lock-out Function:** When the light is turned off, long press the button for 5 seconds to enter the lock-out mode. After entering the lock-out mode, all button operation is invalid and the indicator light is not responsive. In the lock-out mode:
 

- Click 5 times within 3 seconds to exit the lock-out mode.
- Charge and exit the lock-out mode.

⑧ **Circuit Protection:** Circuit overcharge protection, Overdischarge protection, Short circuit protection.

⑨ **Temperature Control Protection:** When the temperature is higher than 65 °C, it will automatically switch to medium steady mode. When the temperature is lower than 55 °C, it will switch back to the memorized mode. When the temperature is higher than 90 °C or lower than -20 °C, it will enter the protection mode: It will force to be locked in low steady mode, and the power indicator flashes 3 times and then turn off for 1 second and then repeats this pattern. If the temperature returns to normal, it will exit the protection mode.

## 6. SPECIFICATION

Model	KiW-800
Light Source	LED
Max Brightness	800lm
Battery	2500mAh
Input	5V/2.0A
Charging Time	≈1.5hrs
Optical Beam Pattern	Cut-Off Beam
Beam Distance	>200m
Waterproof Level	IPX6
Dimension	24,2x35x98,7mm
Net Weight	124g



## Shenzhen Gaciron Technology Co.,Ltd

Headquarters: Rm101, Joinin Hub, Innovation Community, Honglang North, No. 49th, Dabao Rd, 28th District, Bao'an, Shenzhen, China

Customer service hotline: 86 755-23322700

Website: www.gaciron.com

Product Standard: Q/JXL 004-2022

Made in China

