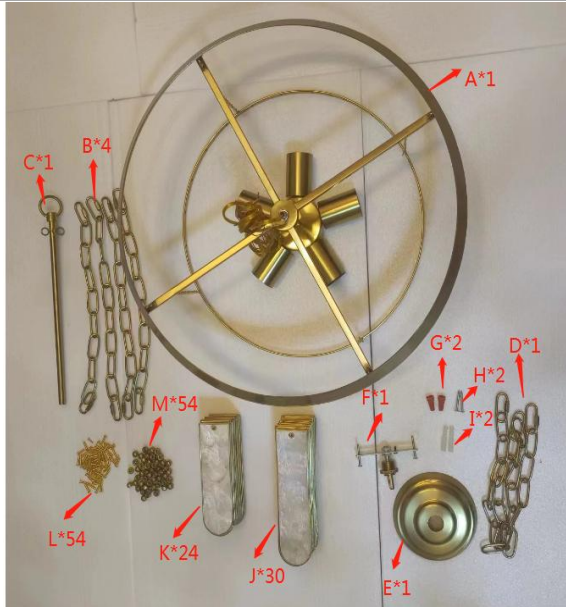


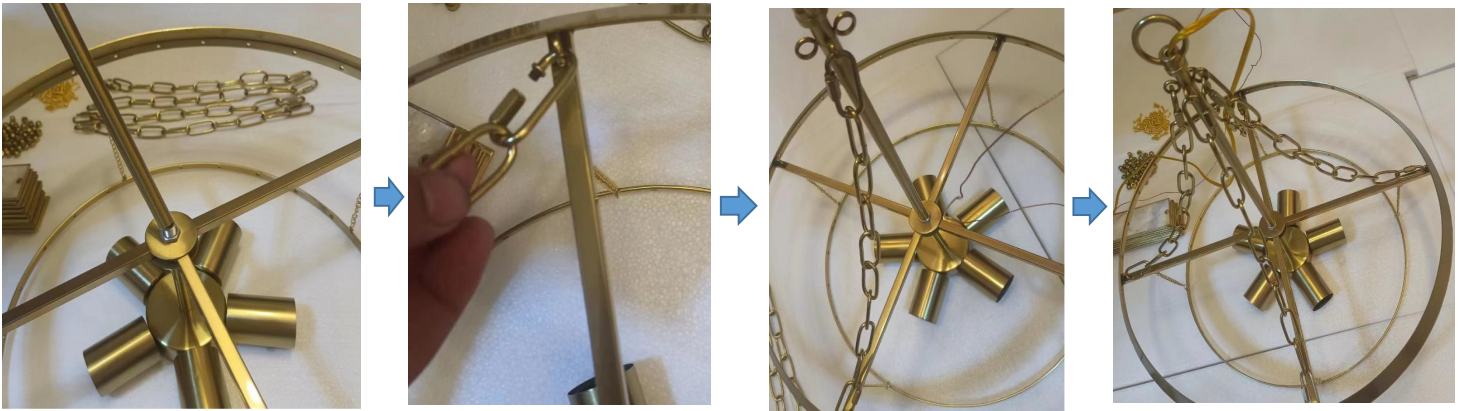
Installation Guide

Picture 1



Parts List: H: M4*30MM, L: M4*10MM, 50 minutes, installation difficulty: 2, installation number: 2

Picture 2



Step1: Tighten the pole C in light frame A's cluster body, four hanging chains B are hung on light frame A and pole hook C.

Picture 3



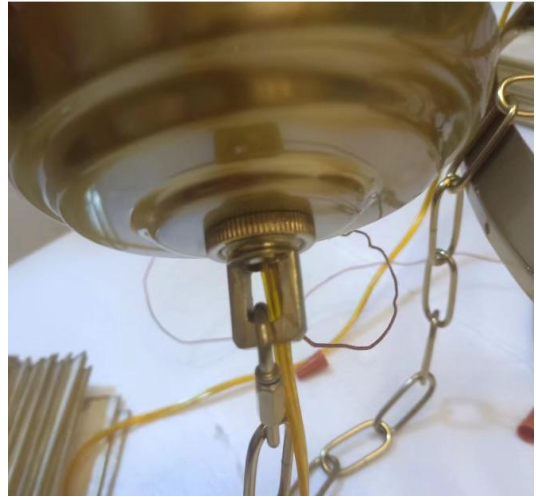
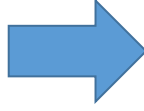
Step 2: Install the ceiling plate E as shown, through the wire, wiring and G line cap insulation (Note: wiring to distinguish between zero wire and fire wire)

Picture 4



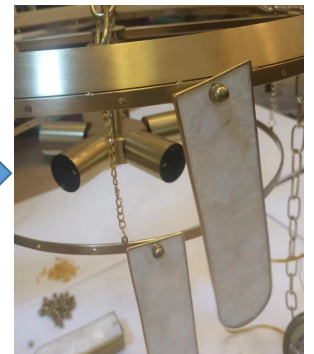
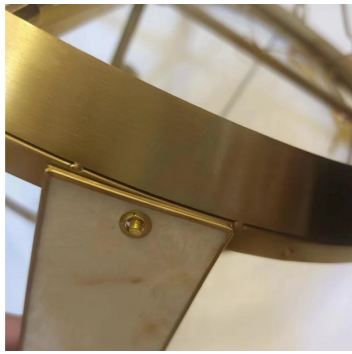
Step 3: as shown in the diagram, the pegboard F mounted on H expansion screws and set the rubber plug I fixed on the wall.

Picture 5



Step 4: as shown in the diagram, with the hanging chain D buckle the light body A and ceiling plate E, and then tighten the E ceiling plate, first install the light source test light, no problem before the next step.

Picture 6



Step 5: As shown in the diagram, with screws L through the upper hole in the light frame A, hanging J shell pieces, and then lock with M nuts, with screws L through the lower hole in the light frame A, hanging K shell pieces, and then lock with M nuts, in turn hanging full. (Warm tips: long shells hang the upper layer, short shells hang the lower layer)

Picture 7



Completion.