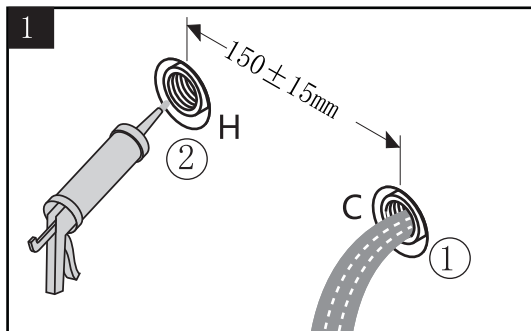




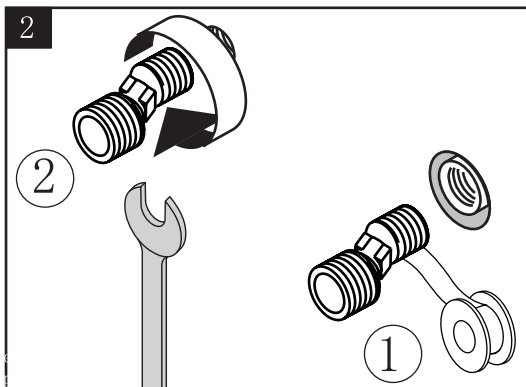
Dual Function Hot & Cold Folding Kitchen Faucet

INSTALLATION INSTRUCTIONS

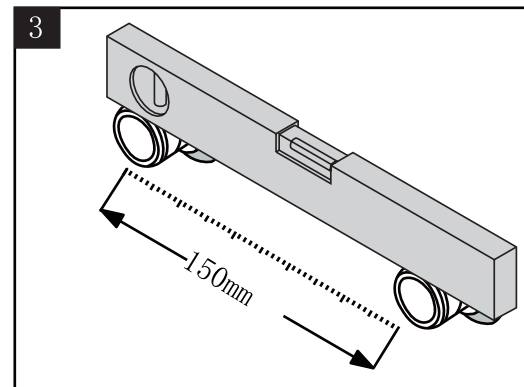
W-52(ES)



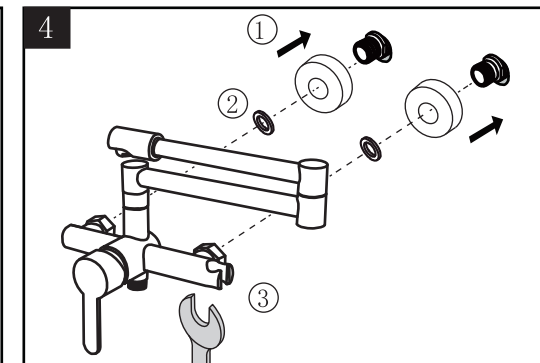
*Turn on the water and flush the water pipe for 3minutes installation, Rinse out the sand and gravel in the water.
*First seal the gap between the G1/2 water outlet and the wall with silicone sealant, the center distance of the 2 water outlets must be between 150±15mm.



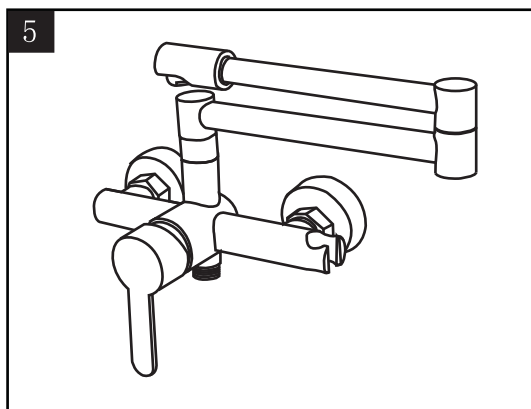
First wrap the Teflon tape on the thread of the swivel elbow. Then use a wrench to screw the two swivel elbow into the wall and cold water outlet.



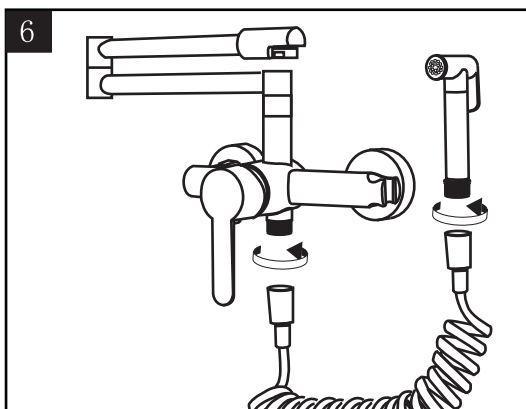
Adjust the swivel elbows that the center distance of the two swivel elbows is 150mm, confirm the two swivel elbows are at the same level.



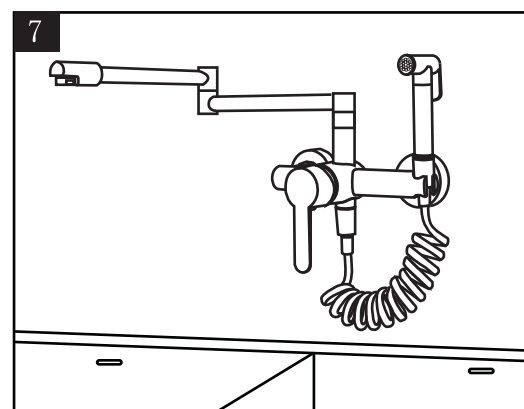
As shown in picture, install the decorative cover cap onto the swivel elbow first, and then fix the faucet with a wrench. Note: Don't forget step 2 put the washer, avoid sand clogging the faucet.



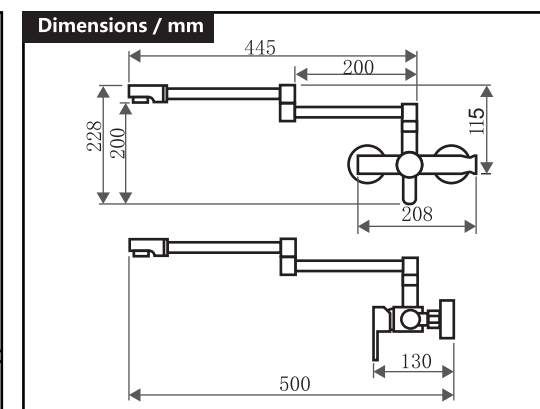
After the faucet is partially install as shown in picture, fold the spout back to wall when no in use, saving your kitchen space.



As shown in picture, use the hose to connect the faucet sprayer.

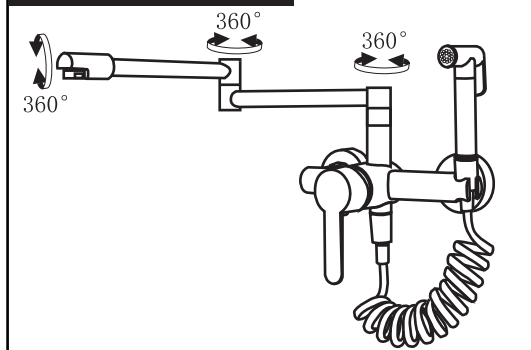


Installation finish! Easy to pull out when using!



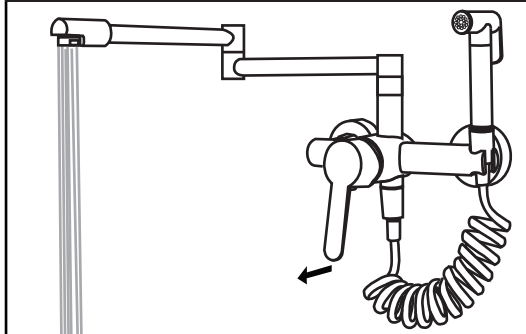
According to the measuring tool and method different, the dimensions will with slight error, please refer the real product!

360° rotation folding design

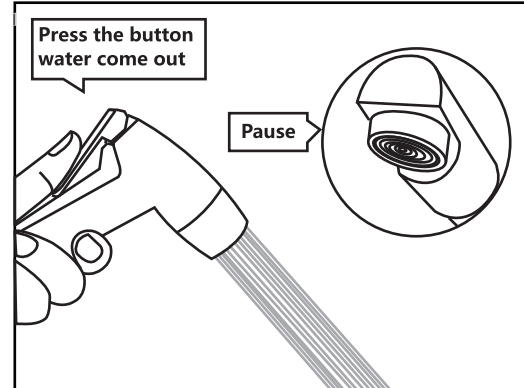


The 360 degree rotation folding design create maximum convenience, save more space.

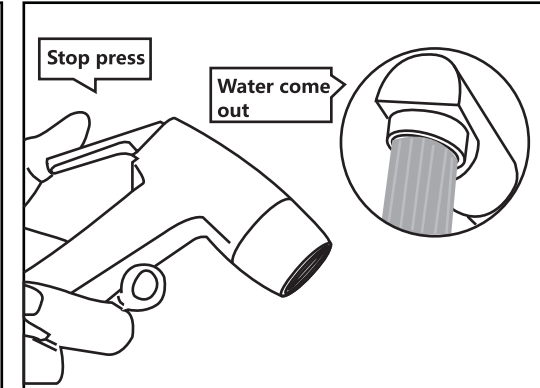
Adopt advanced automatic switching water valve, more humanized design



1. First turn on the main handle, water will come out from the main spout.



2. Press the sprayer button, the main spout water will switch to sprayer.



3. Stop press the sprayer button, the main spout water will recovery.