

GACIRON®

Smart Brake Magnetic Bicycle Taillight

User Manual

W16

! WARNING

ATTENTION:

- * Please charge the product at the environmental temperature between 5°C and 40°C.
- * When charging, it is recommended to use a 5V USB power adapter.
- * After charging, please unplug the power connector.
- * Please do not charge, discharge or store the product in high temperature environment, otherwise it will accelerate the battery aging.
- * Please do not put the battery in car or near power sources.
- * After correct charging, if the battery life is getting shorter and shorter, it means that the rechargeable battery has reached its effective service life. Please replace the battery at the local maintenance point and properly dispose of the used rechargeable battery according to local regulations.

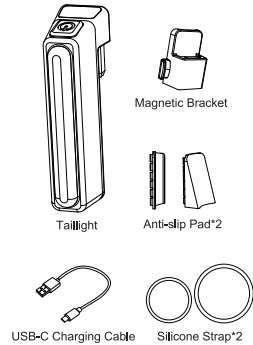
STORAGE PRECAUTIONS:

- * The product needs to be recharged every three months without being used, so as to avoid battery damage and unusable situations.
- * Please fully charge the lights and store them in a cool dry place.

USING PRECAUTIONS:

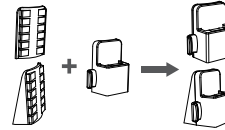
- * Please do not throw the product into fire.
- * Please do not soak the product in water.

1. PACKAGE LIST

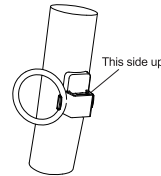


2. INSTALLATION

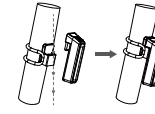
Insert the anti-slip pad into the magnetic bracket as the picture shown below (Flush mounting method and vertical mounting method are both selectable).



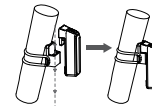
Tighten the magnetic bracket to the seatpost with the silicone strap (The round post of 31.8mm pipe diameter is recommendable in this way).



Insert the light into the bracket as the picture shown below. The light will be locked into place by the magnetic force.



The installation effect of the flush mounting method



The installation effect of the vertical mounting method

Warranty Certificate

User's Information (Filled In By User)

Name: _____ Phone: _____

Zip Code: _____

Address: _____

Purchase Date: ____ Year ____ Month ____ Day

The Following Are Filled In By The Consignee:

Sales Information: _____

Sales Company (Stamped With Company Seal)

Phone: _____

Address: _____

Nearby Service Guidance
(Customer First Contact Point)

Service Unit: _____

Phone: _____

Address: _____

Warranty Card

1. Please contact the wholesaler for customer service. For inherent problems under correct use, we accept a return during seven days since purchase, Users are allowed to replace a new product of the same model for free during fifteen days since purchase, and package is excluded in the replacement.
2. Purchase date is defined in accordance with the invoice or receipt made by wholesaler.
3. Under the following circumstances, replacement and warranty are both invalidated, but we offer a paid repair service.
 - (1) All damages caused by subjective factors, such as using under abnormal conditions or against the user manual.
 - (2) User's independent repairing and modifying or other unauthorized maintenance.
 - (3) Damages caused by improper shipping.
 - (4) We offer replacement/maintenance service by presenting this card, please show your invoice or receipt when the service is needed.
4. We offer replacement/maintenance service by presenting this card, please show your invoice or receipt when the service is needed.
5. Gaciron is irresponsible for any damages caused by the following improper uses.
 - (1) Hidden safety hazards or incidents caused by user's improper operation.
 - (2) Hidden safety hazards or accidents caused by irresistible factors.
 - (3) Damages or accidents or injuries caused by user's independent operation against the manual or using other materials or accessories on the product which causes malfunction.
6. Wherever you purchase this product, you have the total access to equivalent services from the nearest customer service center; if the problem is not solved to your satisfaction, please make a phone call to us or email to our customer service department.
7. The company reserves all the right to modify and explain the above terms.

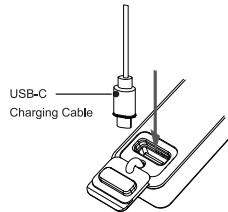
3. CHARGING

Uncover the USB-C waterproof silicon plug on the back of the light, then insert the USB-C cable to connect the charging device.

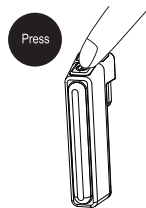
The flashing red light indicates that the remaining battery is less than 20% and it needs to be charged in time.

Charging: The indicator light flashes in red color.

Fully Charged: The yellow indicator light is constant on.



4. OPERATION AND FUNCTION



Working Mode	Lumens	Running Time
Fog Light Mode: High Frequency Flash	30 lm	≈5 hrs
Traill Mode: High Quick Flash	15 lm	≈12 hrs
Power Saving Mode: Low Slow Flash	4 lm	≈17 hrs
Low Steady	2 lm	≈11 hrs
High Steady	5 lm	≈5 hrs

1. Long press the button for 0.75 seconds to turn on/off the light. Short press the switch button to select lighting modes: power saving mode - trail mode - fog light mode - 2 lm steady - 5 lm steady - cycle.

2. In power-on status, long press the power button for 3 seconds at any working modes until the indicator light flashes three times, it goes back to the previous mode and can turn on/off the brake light function.

3. Braking function: In any working modes, if a heavy brake action is detected, the light will remain on for 3 seconds at 30 lumen high brightness.

4. After 120 seconds without any motion, the light will enter into the sleep mode, and wake up again if any vibration detected.

5. SPECIFICATION

Model	W16
Light Source	LED
Max Brightness	30lm
Battery	200mAh
Input	5V/0.1A
Charging Time	≈2.5 hrs
Visible Angle	>300°
Visible Beam Distance	>1000m
Waterproof	IPX7
Recommendable Pipe Diameter	31.8mm
Dimension	18*67.8*26.7mm
Net Weight	≈18.2g



Shenzhen Gaciron Technology Co.,Ltd

Headquarters: Rm101, Joinin Hub, Innovation Community, Honglang North, No. 49th, Dabao Rd., 28th District, Bao'an, Shenzhen, China

Customer service hotline: 86 755-23322700

Website: www.gaciron.com

Product Standard: Q/JXL 002-2022

Made in China

