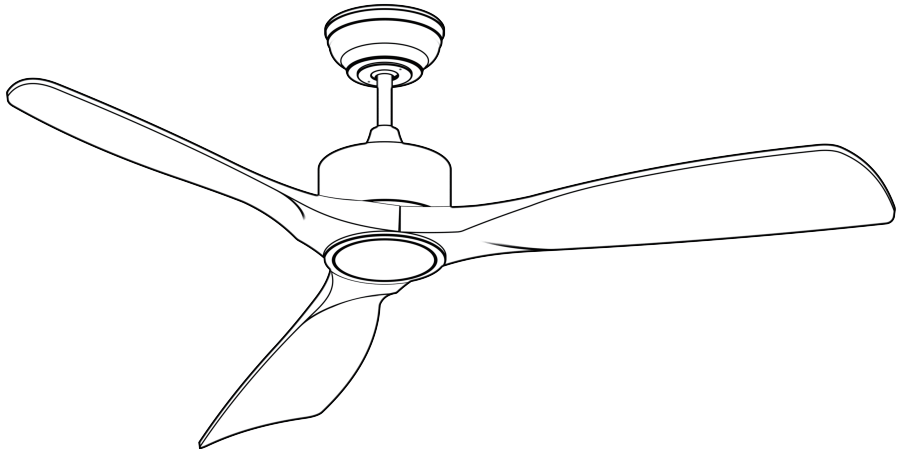


Ceiling Fan with Light Specification Sheet



Models & Finishes

CFL-0015-BK: Matte Black

CFL-0015-BW: Black&Walnut

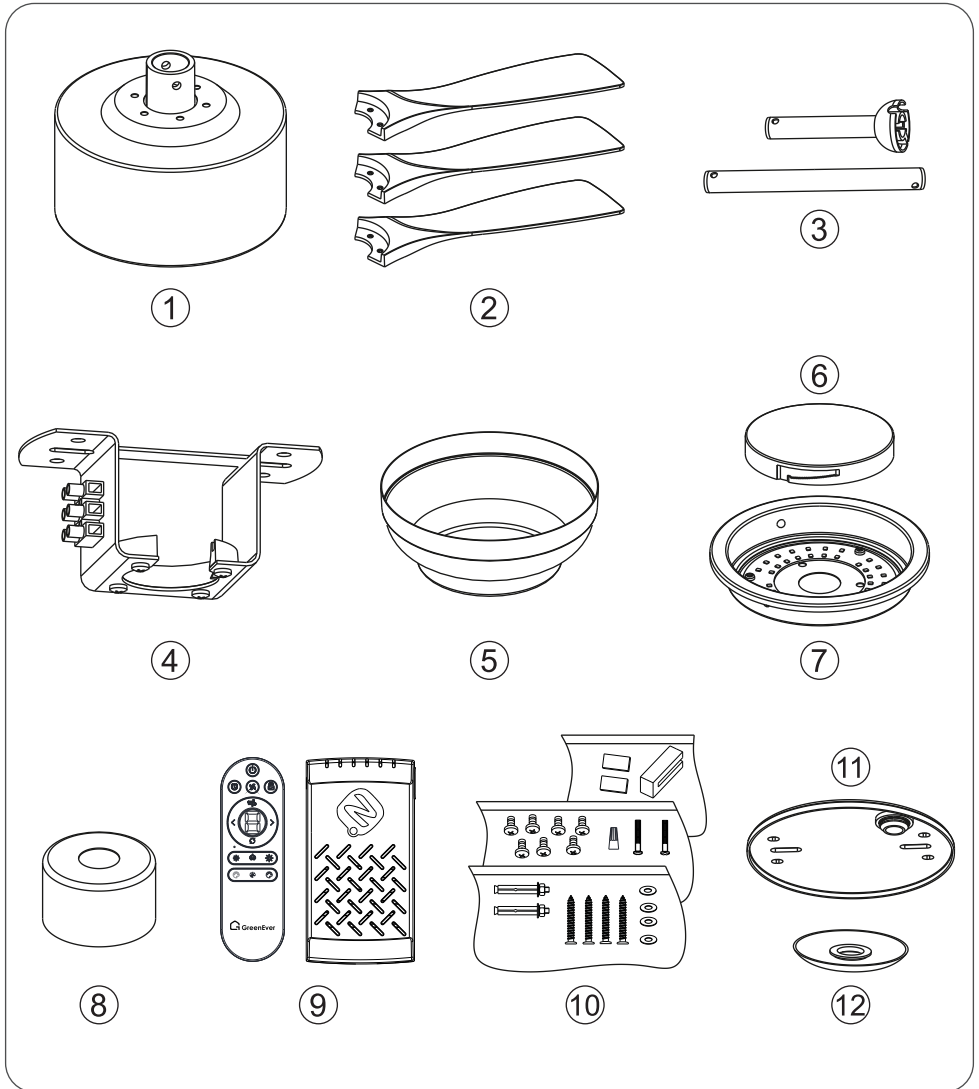
CFL-0015-WG: Black&Walnut

CFL-0015-CH: Silver&Walnut



DOE

Included Components



Electrical, Light & Motor Specs

No.	Name	Qty.
①	Motor Assembly	1
②	Blades	3
③	Downrod (5 inches and 10 inches, 5 inches one with hanger ball)	1 Set
④	Mounting Bracket	1
⑤	Canopy	1
⑥	Light Shade	1
⑦	LED Light Kit	1
⑧	Upper Cover	1
⑨	Remote Set	1
⑩	Screws and Washers Package	1
⑪	Rubber Pad	1
⑫	Rubber Cover	1

Dimensions & Materials

Dimension/ Material	Specification
Product Width	52 in.
Downrod Size(s)	5 in., 10 in.
Number of Blades Accommodated	3
Blade Length - End to End	25.1 in.
Blade Width - At the Widest Point	6.1 in.
Package Length	27.2 in
Package Width	9.1 in
Package Height	11.2 in
Product Weight	11.7 lb.
Package Weight	16.1 lb.
Distance From Ceiling To Bottom Of Fan	5 in. Downrod: 12.99 in. 10 in. Downrod: 17.91 in.
Body Material	Metal
Blade Material	ABS
Shade Material	PC
Shade Color	Milky White


Electrical, Light & Motor Specs

Category	Technical Details
Input Voltage	120V
Motor Type	DC Motor (Energy Efficient)
Motor Power	35 Watts
Motor Speed	6 Speeds / Max 160 RPM
Operation Mode	Reversible (Summer/Winter Mode)
Light Source	Integrated LED Module
Light Wattage	20 Watts
Luminous Flux	2000 Lumens
Color Temp (CCT)	3-Color Selectable (2700K / 4000K / 6500K)
Color Rendering (CRI)	≥ 80 Ra
Dimmable	Yes (Remote Controlled)
LED Lifespan	25,000 Hours

Replacement Accessories & After-Sales Support

No.	Accessories
1	Remote
2	Remote Receiver
3	12 in. Downrod (Black, White, Gold, Brushed Nickel)
4	24 in. Downrod (Black, White, Gold, Brushed Nickel)
5	Extension Cord (with Light)
6	Extension Cord (without Light)
7	Light Plate

Note: The above-listed accessories are not included in the package as standard. They are intended solely for the replacement of lost or damaged parts of your ceiling fan with light in the future. For the replacement of the relevant accessories, please do not hesitate to contact us:

 +1(888)969-6880

 greenever@grandjoyhome.com

 greenever.grandjoyhome.com