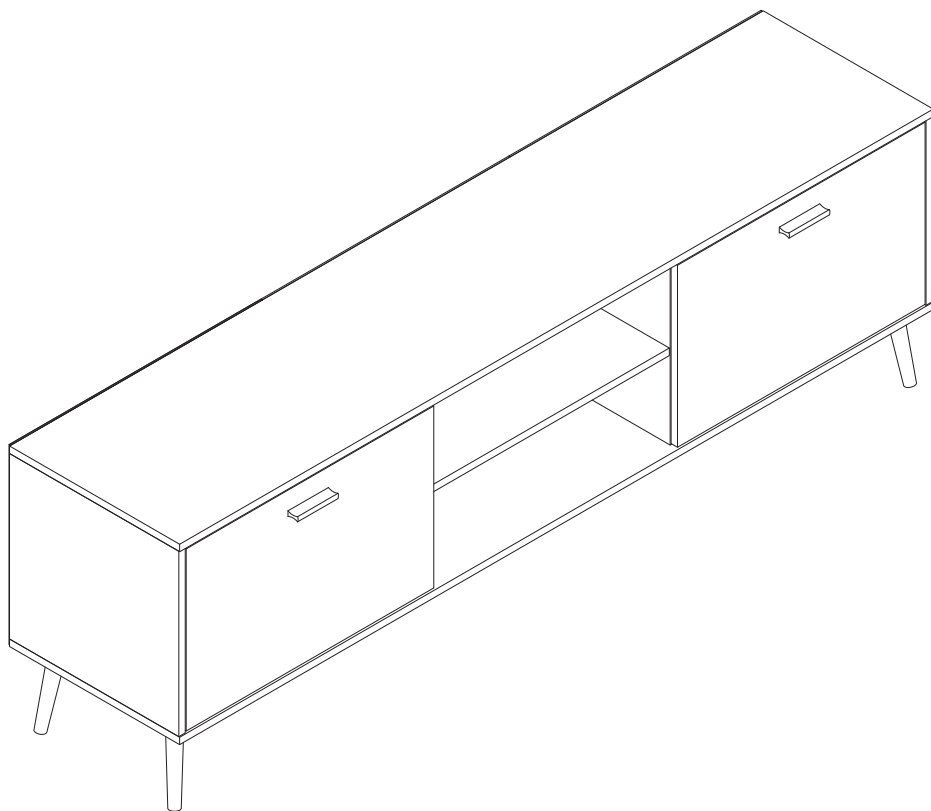
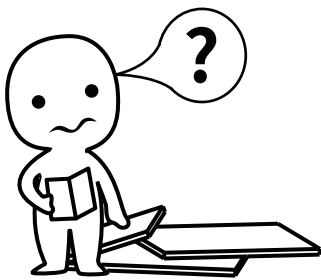


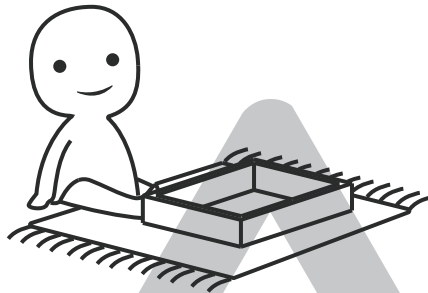
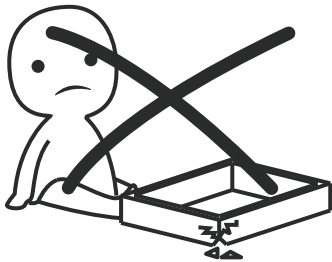
Cabinet





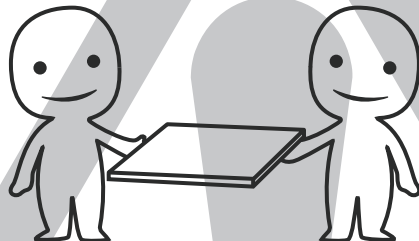
IMPORTANT INFORMATION!

please read the entire manual before starting to assemble and/or using this product. follow the manual thoroughly and keep it for further reference.



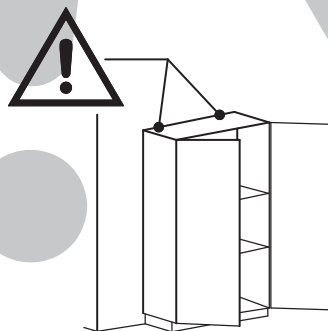
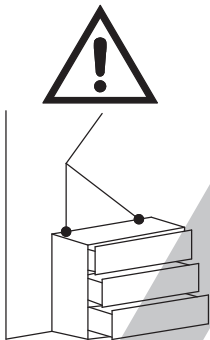
AVOID SCRATCHES!

In order to avoid scratching this furniture should be assembled on a soft layer-could be a rug.



IMPROVE EFFICIENCY !

Try to find a partner to install with you, which can speed up the installation efficiency and shorten the time.



ANTI-TOPPLE WARNING !

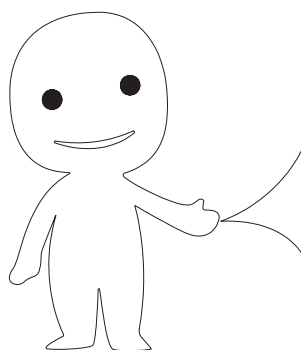
Overturned furniture can cause serious or fatal crush injuries. To prevent tipping over, be sure to use the wall attachment, if not included with this product. Please purchase the wall attachment that fit your wall. If unsure, seek professional advice. Please read and follow each step of the instructions carefully.

IMPORTANT !

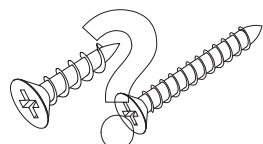
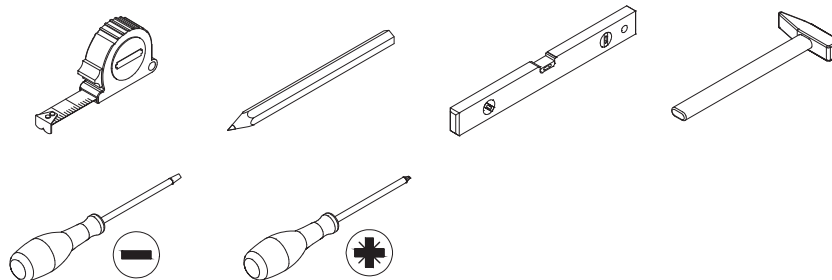
It is important that any product which is assembled using any kind of screw is re-tightened 2 weeks after assembly, and once every 3 months - in order to assure stability through-out the lifespan of the product.

For regular maintenance and cleaning of the product, for the frame, please use a rag dipped in neutral detergent to fully wipe it, and then dry it with a clean rag. For glass materials, wipe with a rag dampened with water glass cleaner, and then dry with a dry rag.

Do not use an electric screwdriver, and do not use too much force when installing, because the board is easy to break.

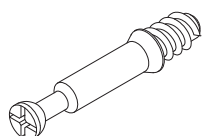


Please prepare the following tools



When installing, please carefully confirm whether each screw corresponds to the manual, accessories with similar shapes can be distinguished by size

A x 12



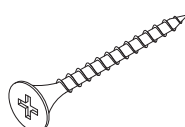
Ø6 x 35mm

B x 12



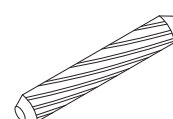
Ø15 x 9.5mm

C x 10



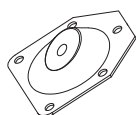
Ø4 x 35mm

D x 20



Ø6 x 30mm

E x 4



F x 20



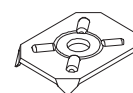
Ø4 x 14mm

G x 32

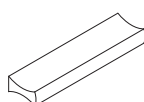


Ø2.5 x 14mm

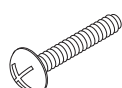
H x 4



I x 2

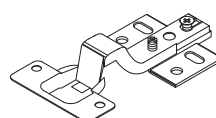


J x 4



Ø4 x 16mm

K x 4



L x 24



Ø4 x 14mm

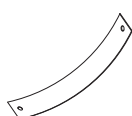
M x 2



M1



M2



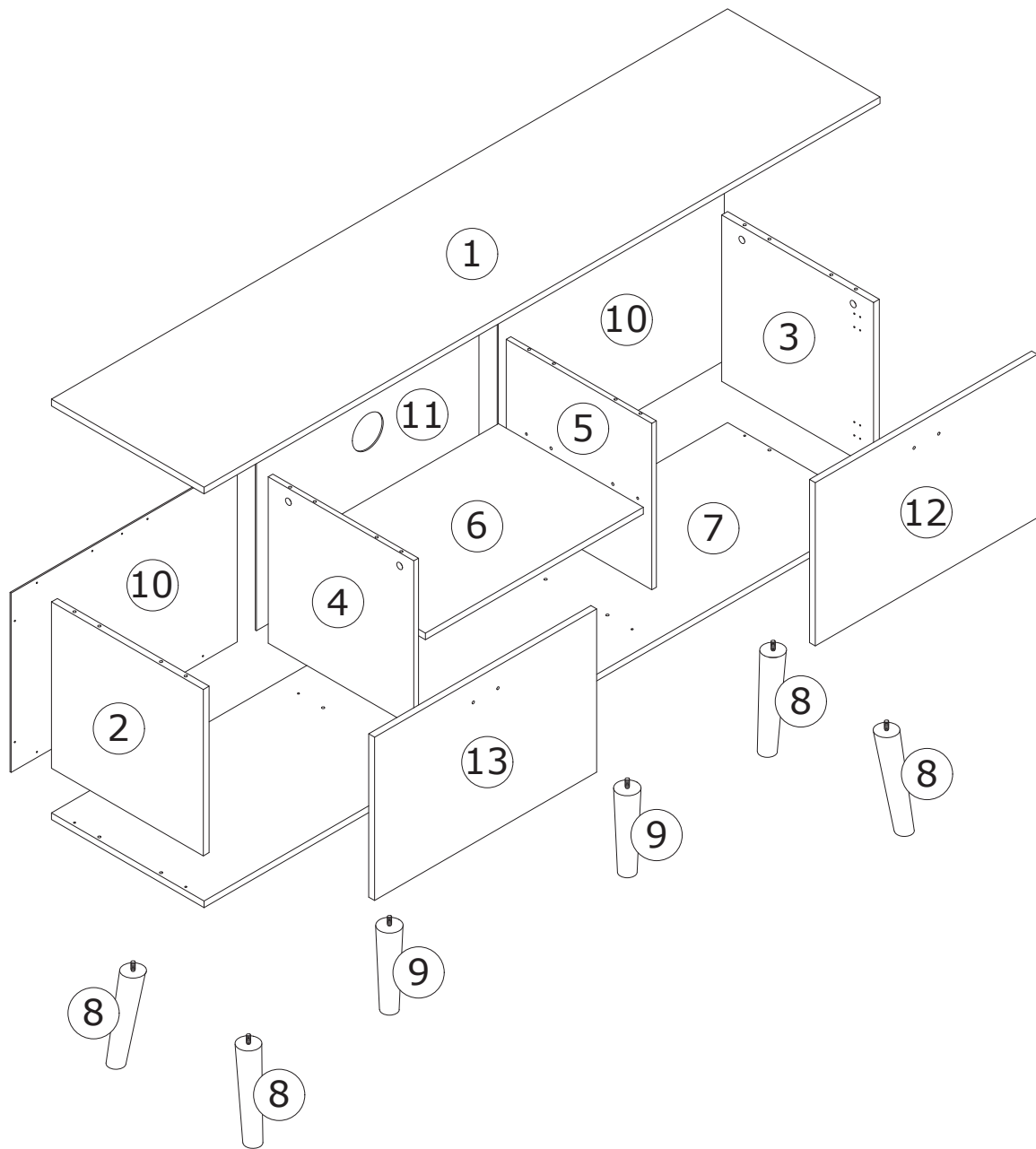
M3

N x 2



O x 2

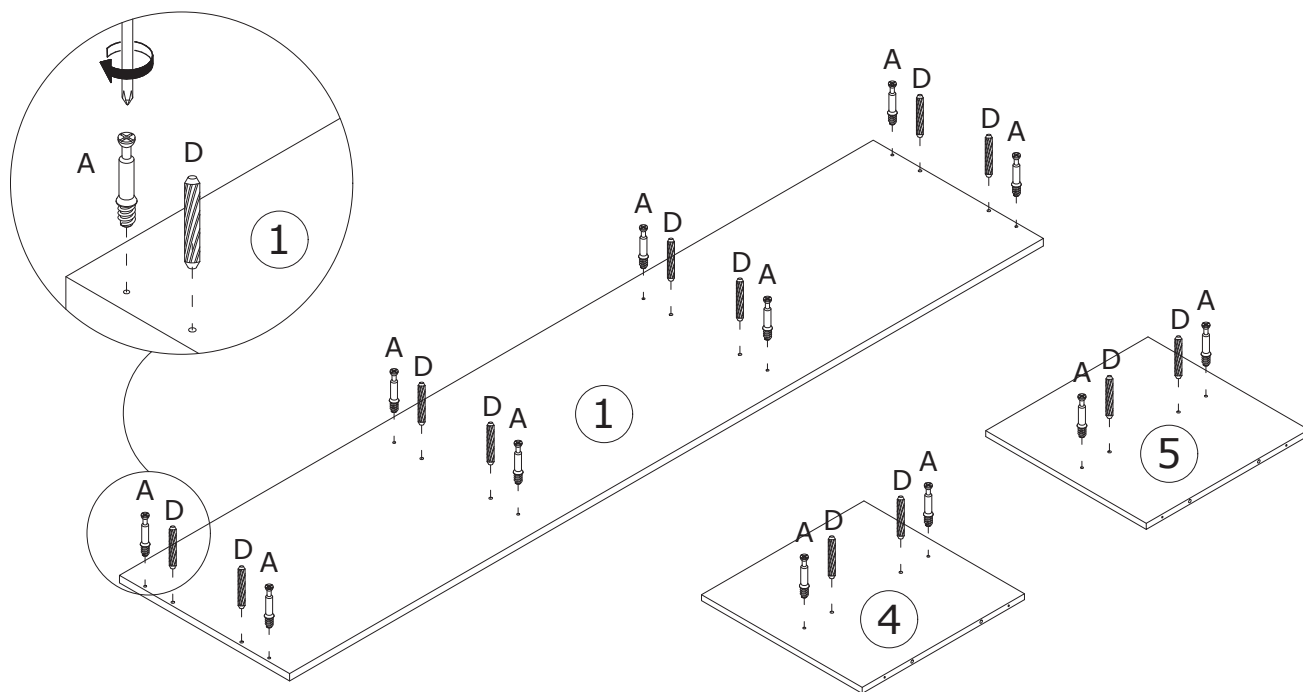
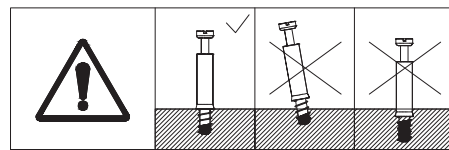




1

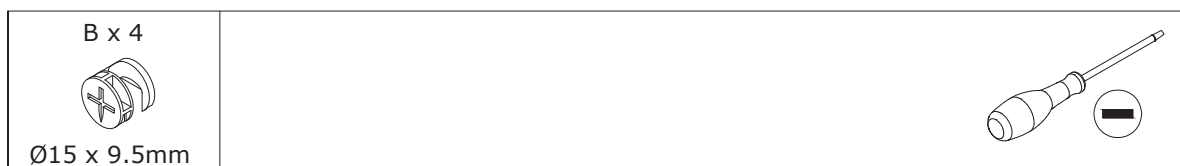


Insert quickfit screw(A) into corresponding holes in No.1, No.4 and No.5 plates with a screwdriver as shown.

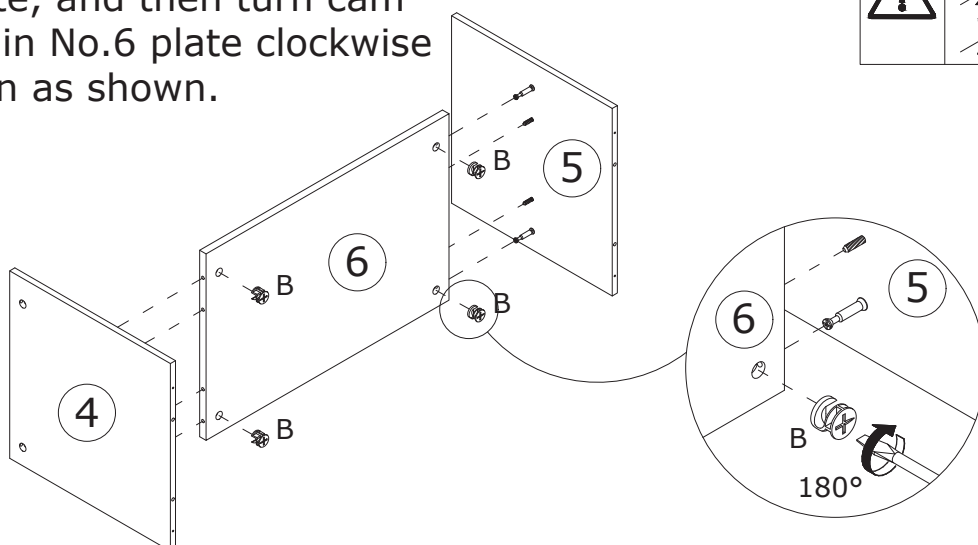
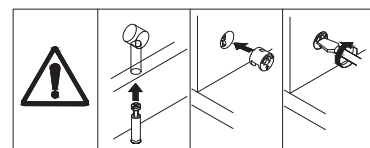


Insert wooden dowel(D) into No.1, No.4 and No.5 as shown.

2



Connect No.4 and No.5 with No.6 plate, and then turn cam locks(B) in No.6 plate clockwise to tighten as shown.

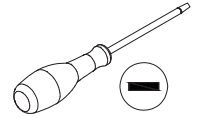


3

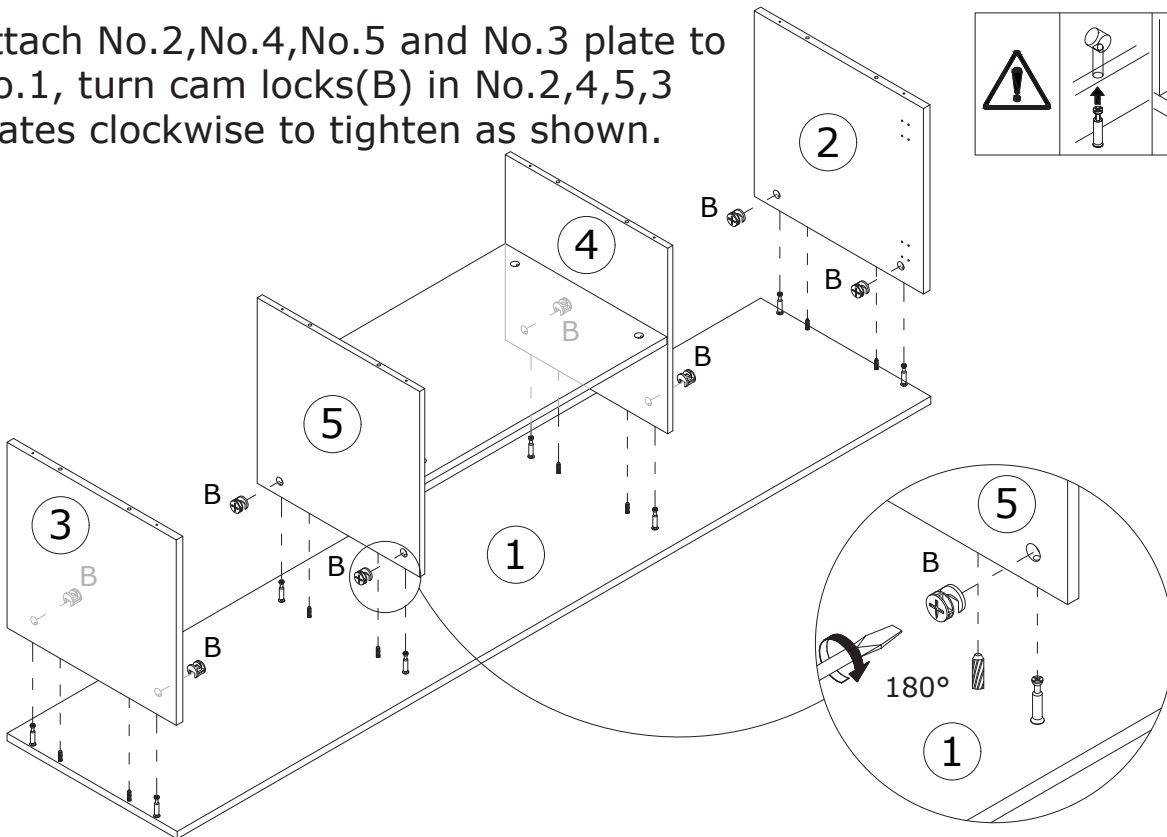
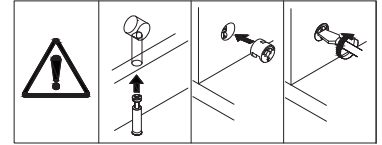
B x 8



Ø15 x 9.5mm



Attach No.2, No.4, No.5 and No.3 plate to No.1, turn cam locks(B) in No.2, 4, 5, 3 plates clockwise to tighten as shown.



4

C x 8

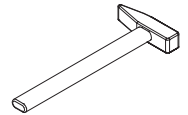
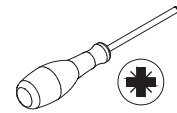


Ø4 x 35mm

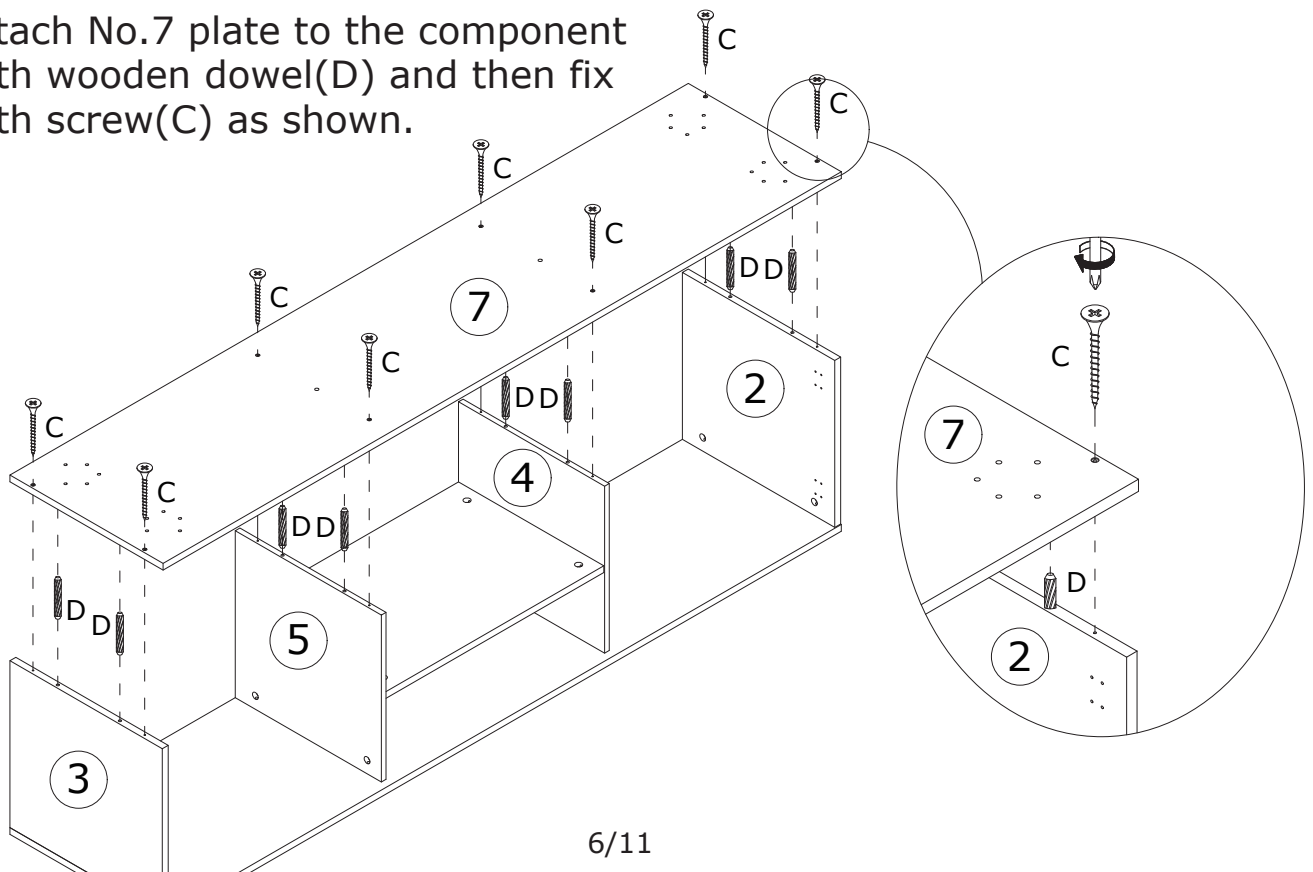
D x 8



Ø6 x 30mm



Attach No.7 plate to the component with wooden dowel(D) and then fix with screw(C) as shown.



5

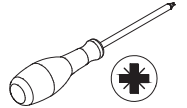
E x 4



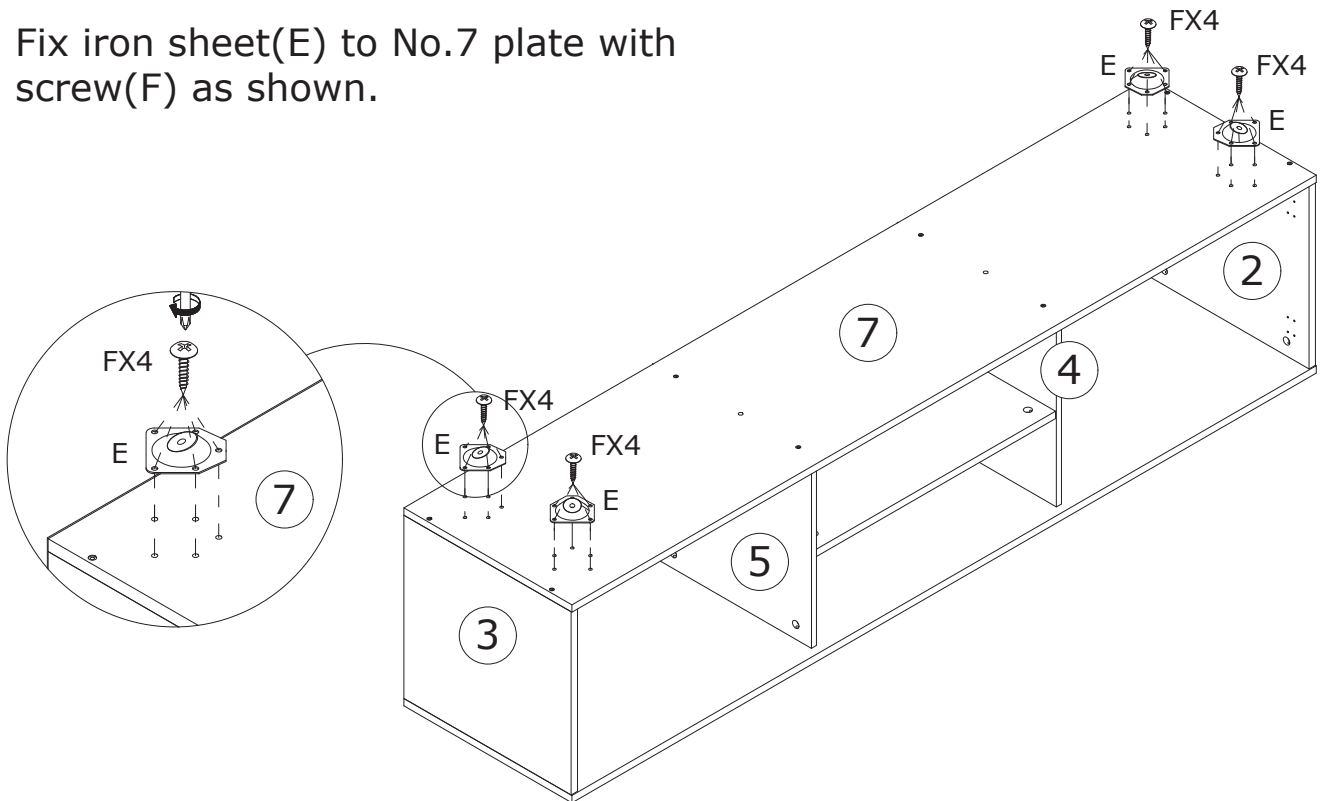
F x 20



Ø4 x 14mm



Fix iron sheet(E) to No.7 plate with screw(F) as shown.

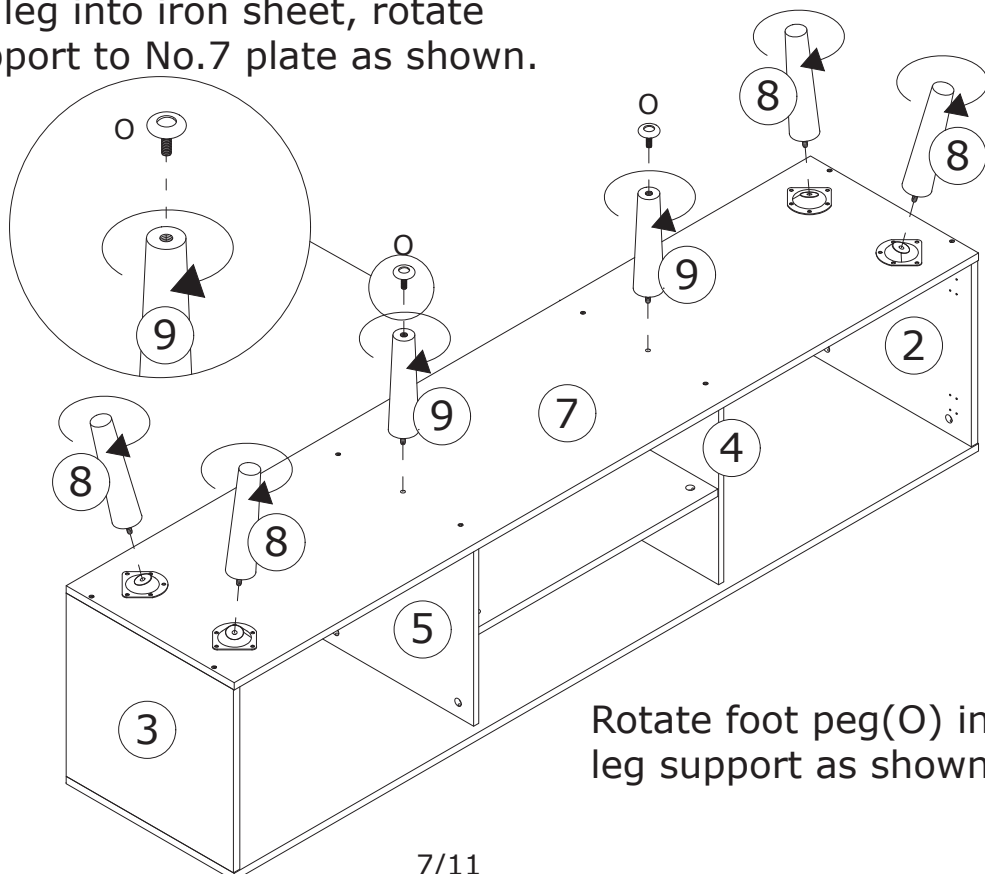


6

O x 2

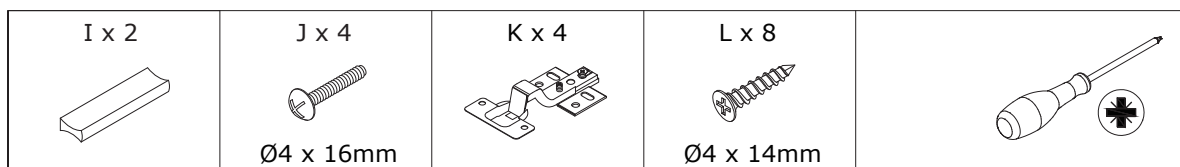


Rotate No.8 leg into iron sheet, rotate No.9 leg support to No.7 plate as shown.

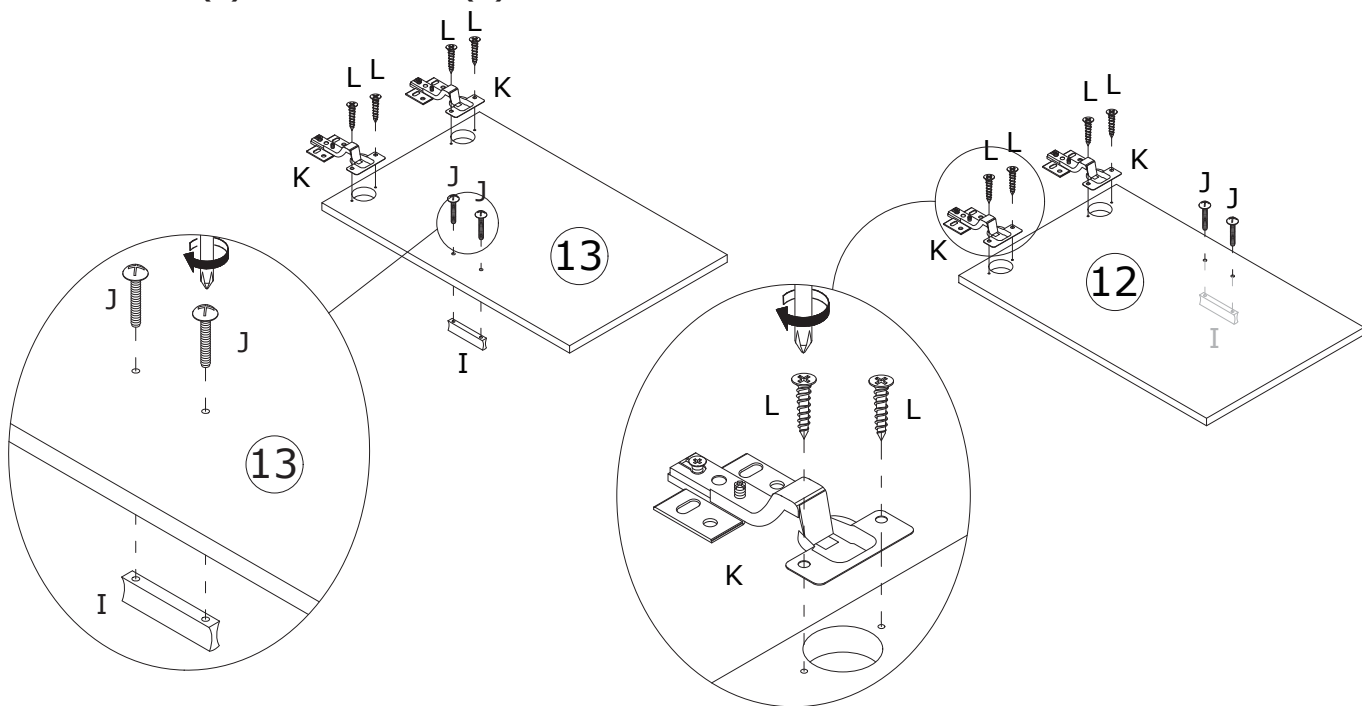


Rotate foot peg(O) into No.9 leg support as shown.

7



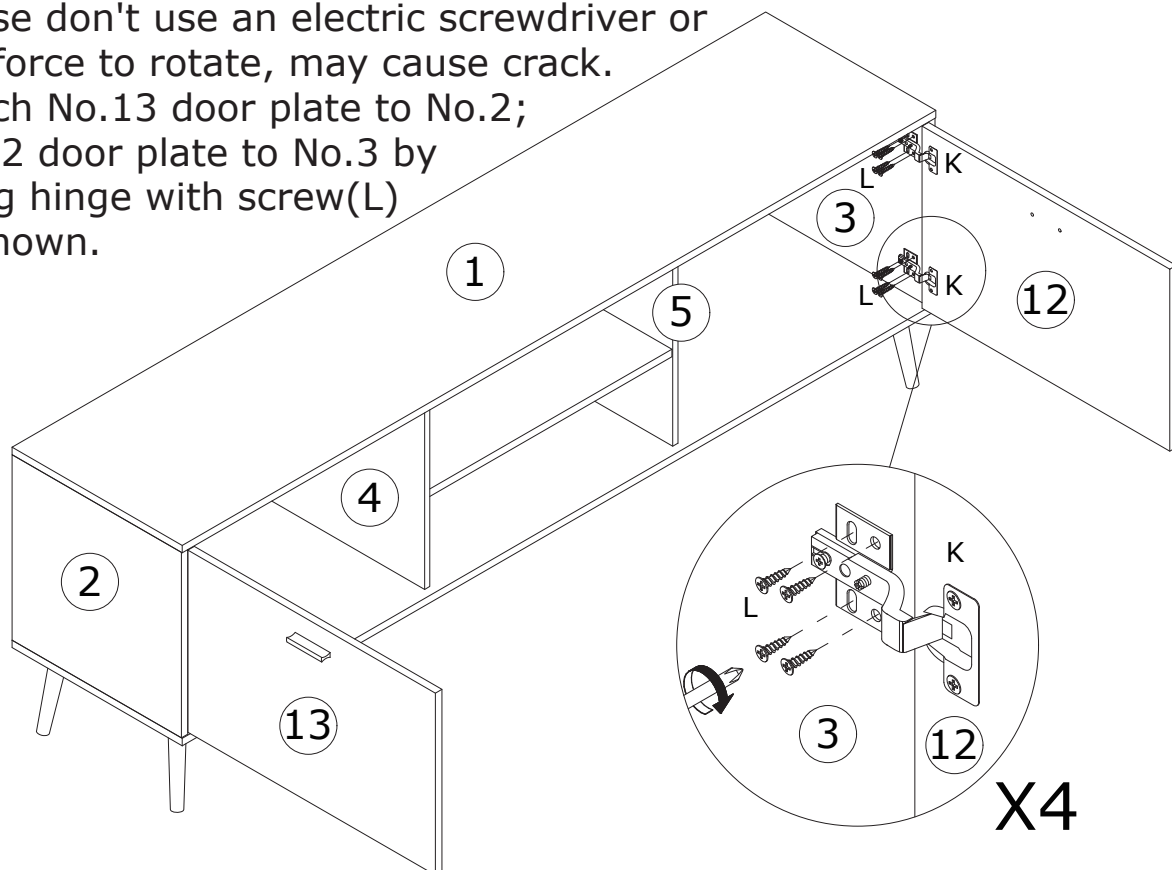
Fix hinge(K) to No.12 and No.13 plate with screw(L) as shown.
Fix handle(I) with screw(J) as shoown.



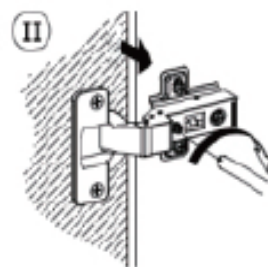
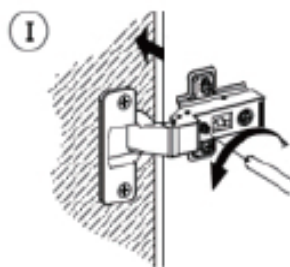
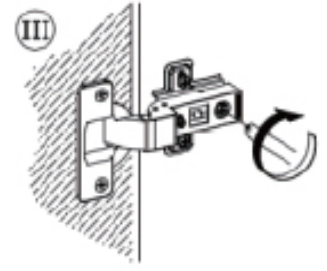
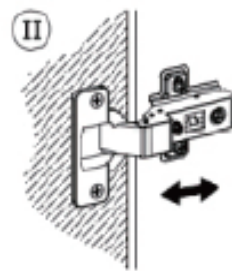
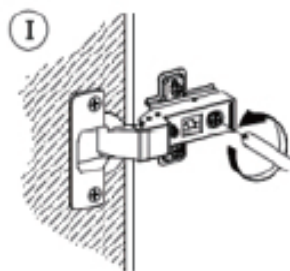
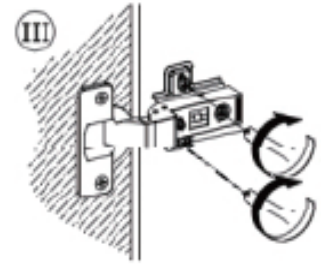
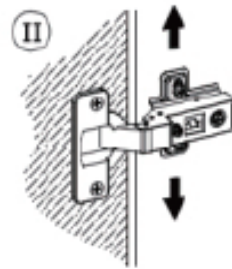
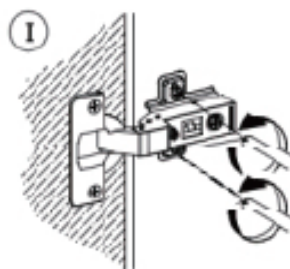
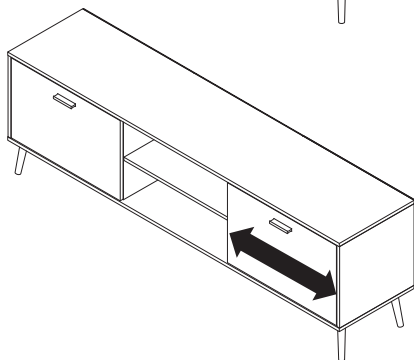
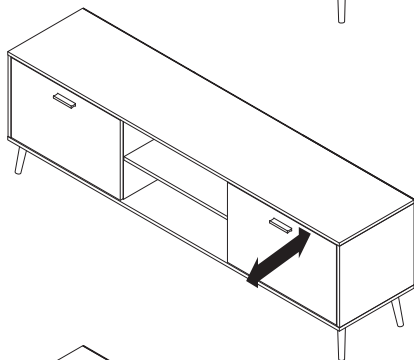
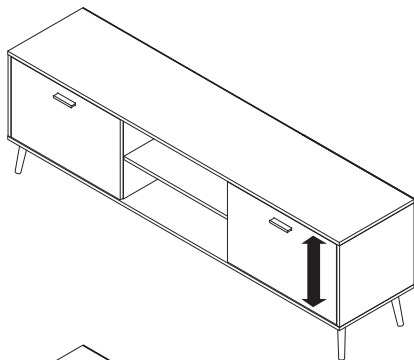
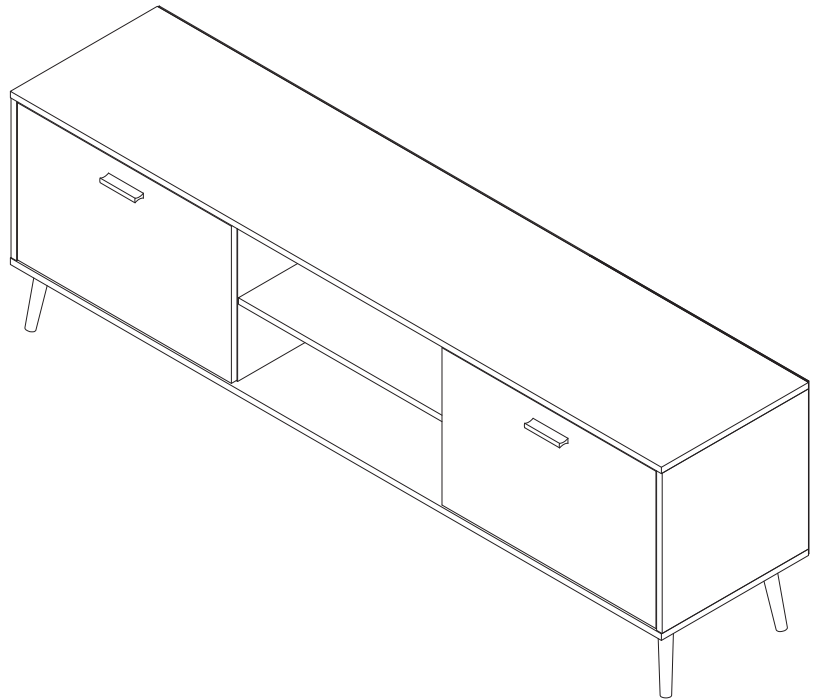
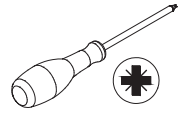
8




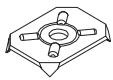


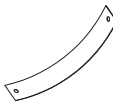
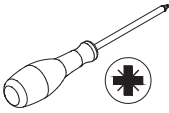
Please don't use an electric screwdriver or use force to rotate, may cause crack.
Attach No.13 door plate to No.2;
No.12 door plate to No.3 by fixing hinge with screw(L) as shown.



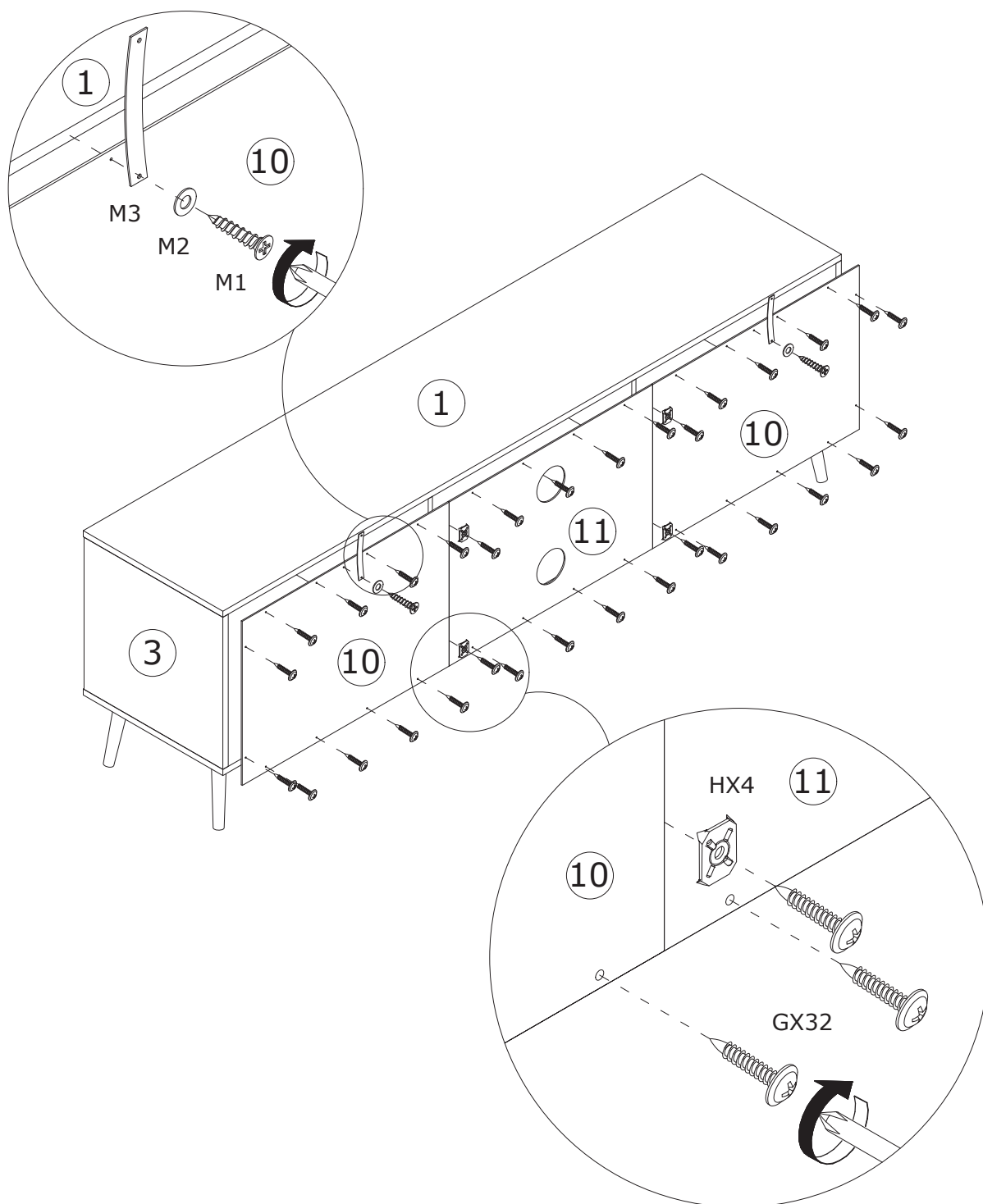
9



10

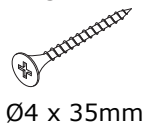
<p>G x 32</p>  <p>Ø2.5 x 14mm</p>	<p>H x 4</p> 	<p>M x 2</p>  <p>M1</p>  <p>M2</p>  <p>M3</p>	
--	--	---	---

Fix No.10 and No.11 back plate using screw(G) as shown.
Fix No.10 with No.11 together using iron sheet(H) with screw(G) as shown.



11

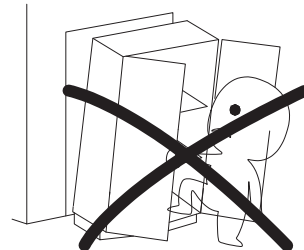
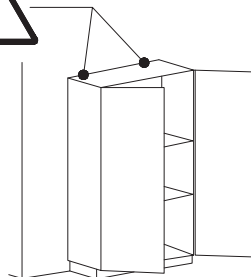
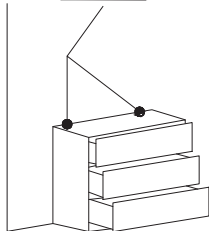
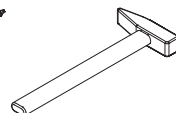
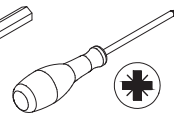
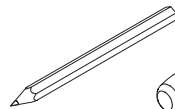
C x 2



M2



N x 2



Install anti-tipping device(M) to stabilize the item as shown.

