



Electric Scooter User Manual

Model NO: H5



Thank you for your choice, please read this manual before using this product.

V2021.0.2

<https://www.LikeSporting.com>

Congratulations on your purchase of this new product.

When designing this electric car, I have imagined a new world. In that world, it is an easy decision to leave your scooter behind!

During the design and development of our R & D team for many years, we focused on every detail. We want to make electric scooter a part of your life.

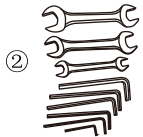
Enjoy, ride and go home safely.

CONTENTS

PRODUCT DETAILS	03
WARNING AND SAFETY	04-06
OPERATION GUIDE	06
HOW TO CHARGE	07
GENERAL TROUBLESHOOTING	07
POWER SWITCH AND KEY	08
LCD-JX168 INTELLIGENT SPEED CONTROL HANDLE INSTRUCTIONS (SPECIAL FOR SCOOTER)	09-14
PRODUCT PARAMETERS	15-16
STORAGE AND DISPOSAL	17
TEMPERATURE LIMIT	17
CHARGER INFORMATION (SPECIFIC MANUFACTURER MODEL)	18
MAINTENANCE CONTACT INFORMATION	18

PRODUCT DETAILS

EN



- ①: Electric scooter
- ②: Tool kit
- ③: Charger

WARNING AND SAFETY

EN

Warning!

The responsibility for the repair and maintenance of the electric scooter is assigned to you, which can help you reduce the danger and injury. Reading this manual and following it will help you reduce the risk.

Be careful:

- ① : Be sure to comply with local traffic laws and regulations.
- ② : No riding in low visibility.
- ③ : Don't use the car for stunts, wheels, or jumping movements, which will increase your chances of injury and damage to the car.
- ④ : No passengers.
- ⑤ : Make sure the safety catch and screws are locked and fastened before riding.

**Devices are not intended for use at elevations greater than 2000 m above sea level
Prolonged Exposure to UV Rays, Rain and the Elements May Damage the Enclosure Materials,
Store Indoors When Not in Use**

WARNING – Risk of Fire – No User Serviceable Parts

AVERTISSEMENT- Risque d'incendie et de choc électrique - Aucune des pièces ne peut être réparée par l'utilisateur

Safety instructions!

1. This product can only be used by one person. Do not carry others at the same time.
2. When riding this product, please wear a safety helmet. When riding, please hold the joystick with both hands correctly. It is forbidden to ride with one hand.
3. It is recommended to charge continuously for 6 hours before the first use to maintain the best condition.
4. Please contact in the open area now, and drive after being familiar with the operation of this product.
5. Do not ride this product on unsafe or illegal roads.
6. Do not turn off the power supply while the vehicle is moving.
7. Do not use this product in an environment lower than -5°C . Please charge the lithium battery at least once every 30 days when it is not in use.
8. Keep your feet on the car when it's moving.
9. Slow down and drive carefully when passing rough roads.
10. Do not ride on the ground with water, oil or ice on the surface.
11. Do not allow the product to be placed in a water depth of more than 5cm or directly impacted by water, which will cause motor and circuit faults.
12. WARNING – Risk of Fire – No User Serviceable Parts.
AVERTISSEMENT - Risque d'incendie - Aucune des pièces ne peut être réparée par l'utilisateur.
13. Unit is not intended for use at elevations greater than 2000 m above sea level.

14. Prolonged Exposure to UV Rays, Rain and the Elements May Damage the Enclosure Materials, Store Indoors When Not in Use.

Tips:

When you want to accelerate, lean forward. When you brake, lean back!

OPERATION GUIDE

Battery

Do not operate the motor while charging!

The indicator light on the accelerator shows the power only roughly (full / empty)!

Do not store the battery fully charged for a long time (more than two months)!

Do not use the battery if:

- 1: When damaged
- 2: When abnormal smell and heat are released
- 3: When any leakage occurs

Avoid contact with substances leaked from the battery.

Batteries should be kept out of the reach of children and pets.

Exposure to battery voltage can cause death or injury.

Using, storing and charging the electric scooter outside the specified scope will lead to the invalidation of warranty period, battery damage and battery charging invalidity.

HOW TO CHARGE

1. Make sure the charging connector is clean and dry.
2. Start by plug the charger into the product, then plug the switch into the power interface.
3. When the red indicator lights up on the charger, it means that the charging is carried out correctly.

GENERAL TROUBLESHOOTING

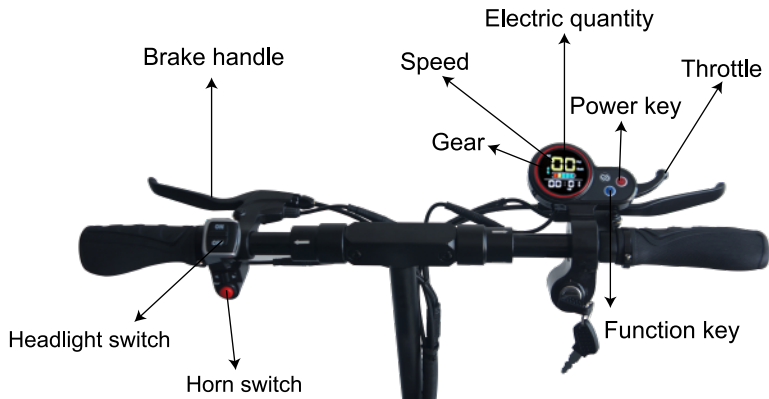
When the product cannot operate normally, please check whether the following actions have been completed:

1. Power on
2. The power display shows the remaining power
3. The brake has been released
4. All sockets and connectors are clean and connected accurately

If the above actions are completed and the single product still cannot operate normally, please consult the product dealer!!

POWER SWITCH AND KEY

EN



Press the accelerator lightly to speed up the electric scooter.

LCD-JX168 INTELLIGENT SPEED CONTROL HANDLE INSTRUCTIONS (SPECIAL FOR SCOOTER)

Version number: 2016020

Model number: JX-168

Working voltage: 8-80V compatible

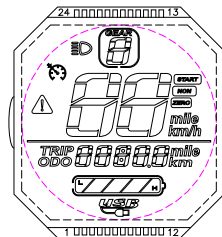
Function:

1. Display function

Speed display, battery indicator, fault indicator, headlight indicator, cruise indicator, gear indicator, total mileage, single mileage, real-time voltage, operating current, operating time, start mode

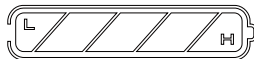
2. Communication protocol: UART

3. All contents of the display screen
(full display within 1S after power on)



Display content introduction

1. Voltage status level POWER



2. Multifunctional display area



Total mileage ODO, Single mileage TRIP, Real-time Voltage V, Running current A, Running time TIME, Fault code E

3. In the fault status display area E, when the symbol \triangle is flashing, short press the ON/OFF key to adjust the display interface to the E interface. The corresponding number under this interface represents the corresponding fault content. The specific status is as follows

ERRO 1. Motor HAL status

ERRO 2. Brake failure

ERRO 6. Undervoltage

ERRO 7. Motor failure

ERRO 8. Handlebar malfunction

ERRO 9. Controller failure

ERRO 10. Receiving time has timed out

ERRO 11. Sending failure

4. Speed display area



Unit MPH, KM/H

5. Gear display area



Press the MODE button shortly to switch the gears cyclically.

The higher the gear, the faster the speed. The motor will not run at gear 0

6. Decorative lights display area

Long press the MODE button, the decorative lights symbol light up

7. Cruise display area



After the motor is running, keep the speed control handle for 5 seconds and the cruise symbol is on. After releasing the handle, the motor keeps running at the original speed, brake or turn the speed control handle again and return it to the cruise state.

8. Startup method to select display area

START

NON

ZERO

Non-zero start: NON symbol lights up Zero start: ZERO symbol lights up

9. USB charging icon display area



When a data cable is connected to the USB interface of the instrument and draws more than 100 mA of current from it, the USB icon lights up. If the icon is flashing, it means the load is in intermittent charging or the load current exceeds 500 mA, and the USB interface automatically turns on protection mode

10. Parameter setting and definition

P02: Mileage unit, 0: KM; 1: MILE;

P04: Sleep time: 0, no sleep; other numbers are sleep time, range: 1-60; unit minute;

P09: Zero start, non-zero start setting, 0: zero start; 1: non-zero start;

P16: Instrument real-time cruise function 1 With this function 0 Without this function

P99: One-key recovery function (in the P99 parameter setting interface, press and hold the MODE button for 5-6 seconds, and all parameters are restored to the initial settings of the first startup)

ODO: ODO clear (in the ODO parameter setting interface, first short press the MODE button and then long press for 5M-6 seconds until the number is zero and release)

2. Brief introduction of key functions:

2.1 In the shutdown state, press and hold the power button to turn on, after turning on, press the power button shortly, and the interface will switch between ODO, TRIP, V, A, E, TM,

2.2 In the power-on state, press and hold the power button to power off.

2.3 Long press the M key and the power key to enter the mode setting. In the setting interface, short press the power key to switch parameters;

Short press the M button to change the state of the vehicle speed, the gear shifts from 0 to the highest gear cyclically

The gears default to 1 gears, 0 gears motor does not run, 3 gears have the highest speed
Parameter value modification:

Enter the parameter setting to meet, adjust to the parameter you want to adjust, and press the power button and M button to increase

Increase or decrease the parameter value, after confirming that the modification is completed, long press the power button and M button to exit the parameter setting, and the parameter modification will be completed after power off and restart.

2.4 The rocker arm adjusts the motor speed, moving from top to bottom, the motor speed increases; let go and return to the zero position.

PRODUCT PARAMETERS

EN

Product name:	H5
Boundary dimension:	125.5*31.5*44cm
Motor power:	48V 800W
Battery capacity:	48v10ah (Customized according to the model)
Standard voltage:	48V
Motor type:	Strong brushless motor
Tire size:	Solid tyre
Maximum load:	200KG
Battery type:	18650Battery
Vehicle weight:	20KG
Charging time:	4-7h
Brake type:	Front and rear disc brake
Maximum speed:	45km/h 1-3 gear free switching
Maximum mileage:	40KM (Rear drum brake)

PRODUCT PARAMETERS

EN

Storage Temperature:	1 month: -20 - 60 °C 3 months:-20 - 45 °C 1 year: -20 - 20 °C
Minimum Ride Weight:	120 lbs

STORAGE AND DISPOSAL

- Before storage, fully charge the electric scooter to prevent battery over discharge due to it's not used for a long time.
- If the storage time is more than a few months, please charge it once a month.
- Do not charge the scooter if the storage temperature is below 0 degrees Celsius. You can charge it in a warm environment (above 10 degrees Celsius).
- You can mask the scooter to prevent dust from affecting its performance.
- Keep store the scooter indoors and put it at the place with dry air and suitable temperature.

TEMPERATURE LIMIT

NAME	PARAMETERS
Battery	Lithium-ion battery
Working Temperature	-10 ~ 40 °C
Charging Temperature	10 ~ 40 °C
Relative Humidity of Storage	5% ~ 95%

CHARGER INFORMATION (SPECIFIC MANUFACTURER MODEL)

Model: GJS150-0541830

Input: AC100-240V-50/60Hz Max.3.0A

Output: DC 54.6V—2.0A

Manufacturer: Shenzhen Gojusin Technology Co.,Ltd

Add: Block B, No.28 Lianhe industrial Zone of First Area Nanyue Community
Longgang District Shenzhen, Guangdong

MAINTENANCE CONTACT INFORMATION:

We provide warranty service and lifetime after-sales consulting service for each self balancing scooter.

Please contact our Amazon aftersales service when you encounter any problems during the use, we will answer you as soon as possible to help you solve the problem.

Email: support@evercross.eu

Website: <https://www.evercross.eu/>

