

VERTICAL OPTICS MANUFACTURER

ETERN
Optoelectronics

Chip & Assembly

Passives

Transceivers

EASP AI Platform for Digital Transformation

COMPANY PROFILE

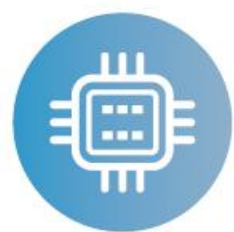
Founded in 2002, ETERN Optoelectronics is a core platform of ETERN (Stock Code: 600105) in the optical device sector. Leveraging ETERN's full industrial chain advantages from optical preform, fiber, cable to optical connectors, we have established R&D and manufacturing bases in Shanghai, Suzhou, Wuhan, Chengdu and other cities, building a complete product system covering laser chips, optical coatings, optical devices and optical modules to provide key core components for high-speed optical modules, data centers and next-generation communication networks.

Meanwhile, ETERN Optoelectronics actively expands its technological boundaries by launching the EASP Enterprise-level Intelligent Agent Service Platform. With the three-in-one solution of "Computing Power – Platform – Intelligent Agent", we help enterprises achieve intelligent knowledge integration and digital business upgrading.

Core Competencies



Full industrial chain integration



In-house core chip R&D



Stable supply chain assurance



AI + intelligent solutions

Global Footprint



Compliance Certifications



UL



CE



CPR



TLC



ISO 9001
2015



ISO 14001
2015



ISO 45001
2018



RoHS

KEY APPLICATIONS

➤ Data Center & High-speed Interconnect



100G EML/10G DML Chips
800G/400G Transceivers
MT-FAU、AWG Assembly
DWDM Filters

➤ Sensing & Precision Optics



CW DFB/1653 TMT Chips
LiDAR/Biomedical Filters
PBS/Prism Optical Elements

➤ Carrier Telecommunication Network



10G/25G/100G Transceivers
EDFA Amplifiers
WDM Devices
10G DML chips

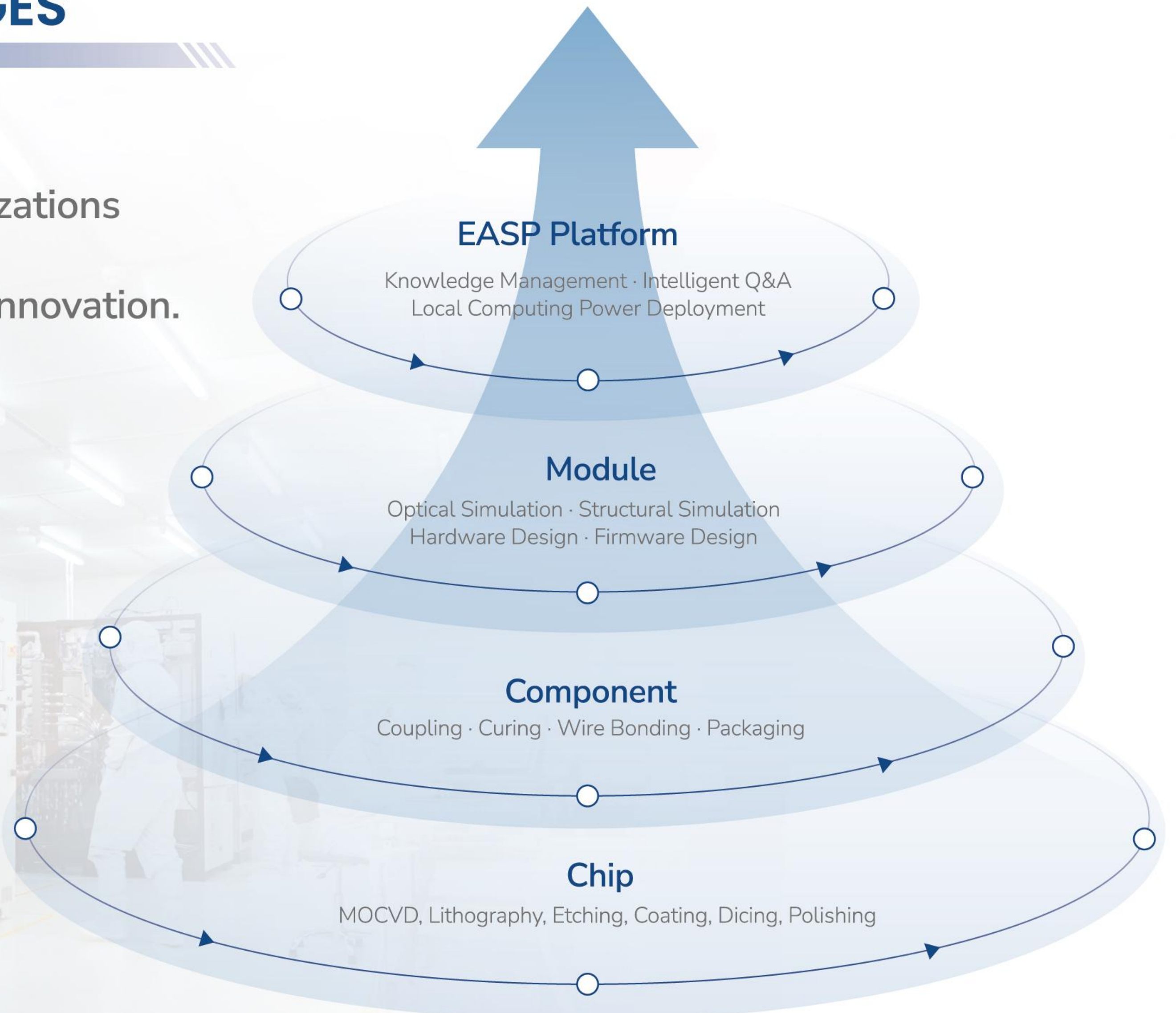
➤ Enterprise-level Intelligent Service



EASP Platform
DeepSeek All-in-one Machine

CORE ADVANTAGES

Let's co-create!
We welcome customizations
for key products
to support your next innovation.



OPTICAL PASSIVE COMPONENTS

MUX/DEMUX

AWG · TFF WDM



Amplifier

EDFA · Raman



Functional Module

OLP/OBP · Hybrid WDM
MCS/OXC · DOF



Micro-optics

Switch · Circulator
Isolator · Hybrid Components



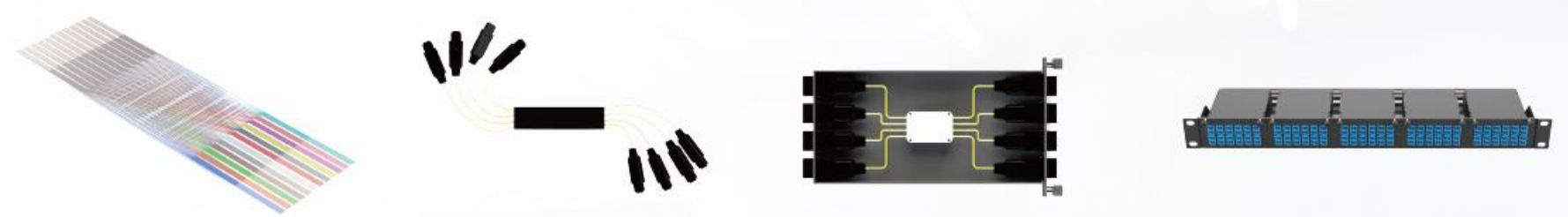
MEMS Components

VOA · Switch · TOF



Optical Connection

Fiber Shuffle
Connections on Board



Optical Assembly for Transceiver

For high-speed transceivers, DCI, DWDM systems, metro networks

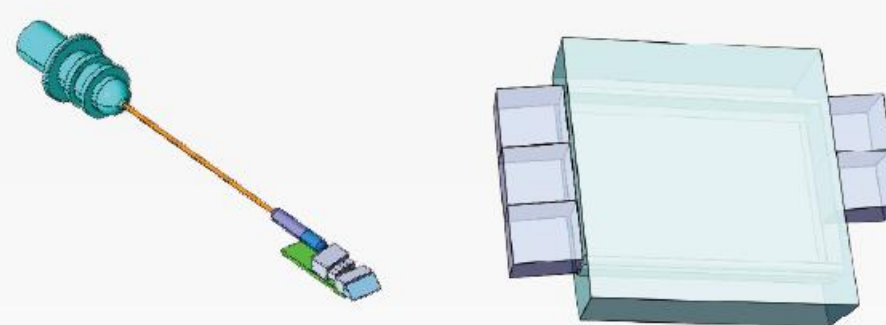
MT-FAU

High integration, multi-channel coupling
Low IL, High RL



Z-Block

Integrated isolator & lens
High ER, Low PDL



AWG

Multi-channel, High-density multiplexing
Low crosstalk, High wavelength accuracy



TRANSCEIVER

155M-10G Transceiver

- SFP 155M-4G 300m-120km 850nm-1550nm
- SFP BIDI 1G-4G 10km-120km 1270nm-1550nm
- SFP+6G-10G 300m-100km 850nm-1550nm
- SFP+BIDI 6G-10G 300m-80km 1270-1550nm



16G/25G /32G Transceiver

- SFP+16G FC 100m-40km 850nm-1550nm
- SFP28 25G 100m-40km 850nm-1550nm
- SFP28 32G FC 100m-40km 850nm-1550nm
- SFP28 BIDI 25G 10km-80km 1270~1330nm



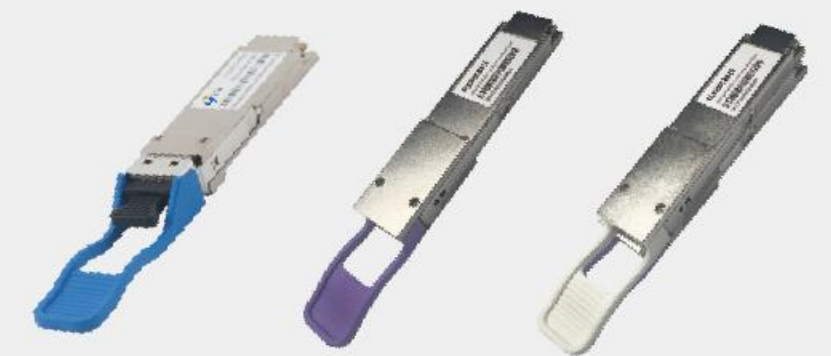
40G Transceiver

- QSFP+ 40G 100m-40km 850nm-1310nm
- CFP 40G 10km-40km 1270nm-1330nm



100G Transceiver

- QSFP28 100G SR4-ZR4 100m-80km 850-1310nm
- QSFP28 100G DR1-LR1 500m-40km 1310nm
- QSFP28 100G BIDI SR-ZR 100m-80km 850-1310nm



200G/400G/ 800G/1.6T Transceiver

- 200G QSFP56 SR4-LR4 100m-10km
- 400G QSFP56-DD SR8/LR8/ER8
- 400G QSFP-DD SR8/LR8/ER8/DR4/DR4+/FR4/LR4/ER4
- 400G OSFP112 VR4/SR4/DR4/FR4/LR4
- 800G OSFP112 VR8/2xFR4/2xLR4/DR8/DR4
- 800G QSFP112-DD VR8/DR8/2xFR4/2xLR4
- 1.6T OSFP224 DR8



CWDM/DWDM Transceiver

- SFP 2.5G 10km-120km DWDM/CWDM
- SFP+10G 10km-80km DWDM/CWDM
- SFP28 25G 10km-40km DWDM/CWDM



AOC Active Cables

- SFP+ 10G AOC 850nm
- SFP28 25G AOC 850nm
- QSFP+ 40G AOC 850nm
- QSFP+ 40G to 4*SFP+ 10G AOC 850nm
- QSFP28 100G AOC 850nm
- 200G QSFP56 1:1 and 1:2 AOC
- 400G QSFP-DD 1:1 1:2 1:4 AOC

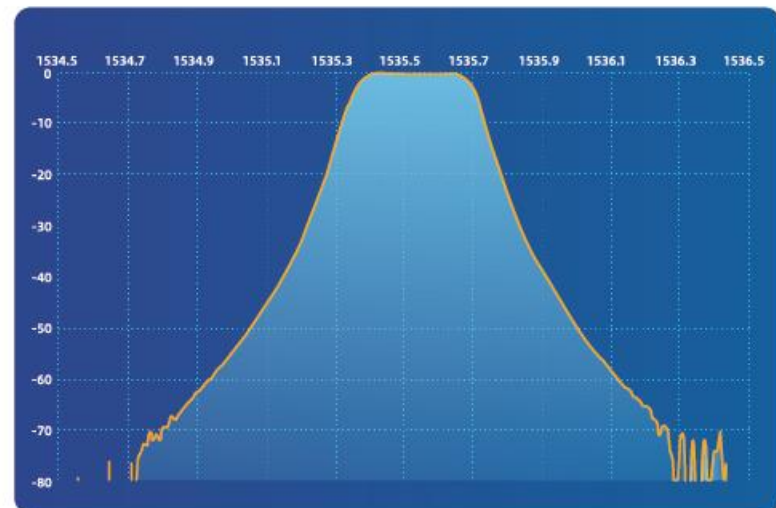


OPTICAL COATING AND OPTICAL ASSEMBLY

Filter/Optical Elements

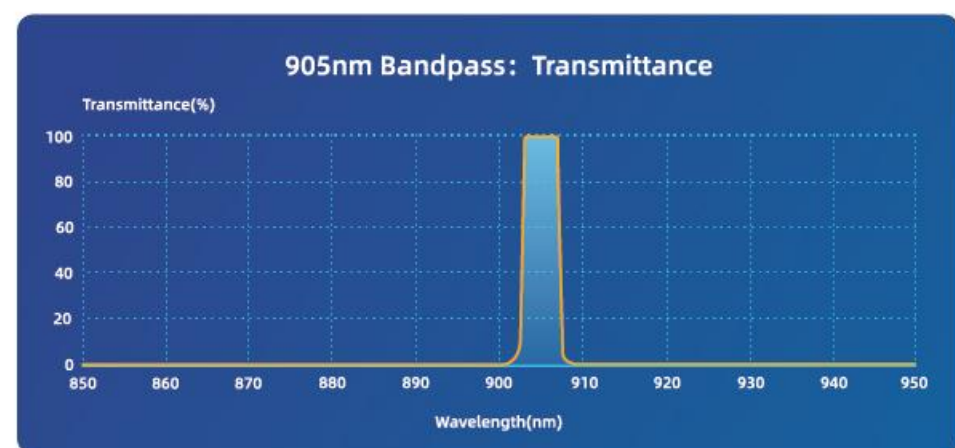
Filter for Telecommunications

- 50/100 Ghz DWDM Filter
- MWDM/Lan-WDM
- CWDM/FWDM
- GFF
- Skip Filter
- 50G PON Filter
- Band-Pass/Edge Filter



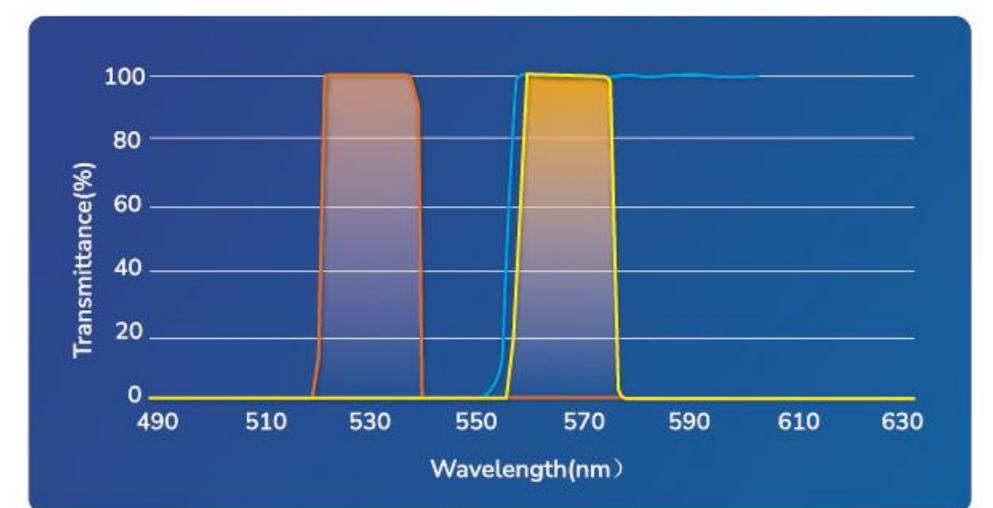
Filter for LiDAR

- 905nm Filter
- 940nm Filter
- 1550nm Filter
- Band pass Filter



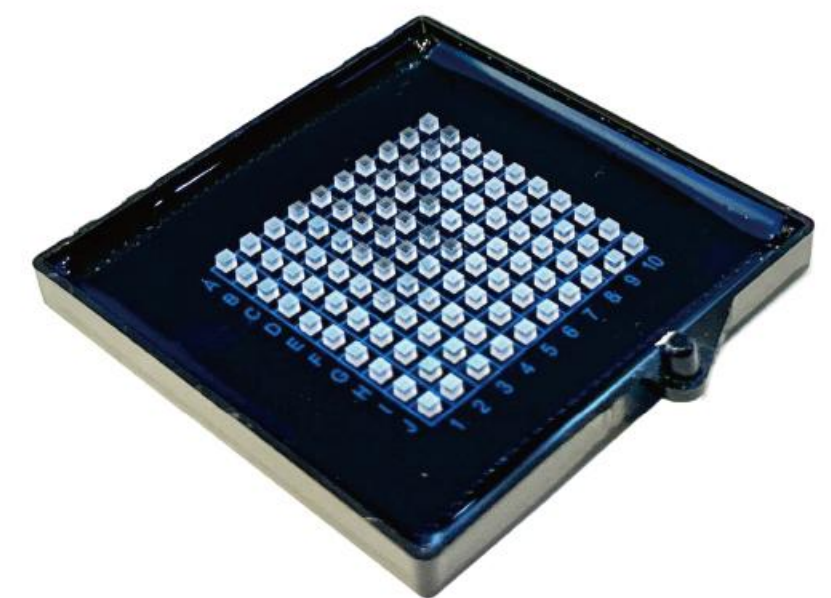
Filter for Biomedical

- PCR
- Flow Cytometry
- Spectroscopy
- DNA Sequencing
- Blood Analysis
- Colorimetry
- Biomedical Imaging
- Microscopy



Optical Elements

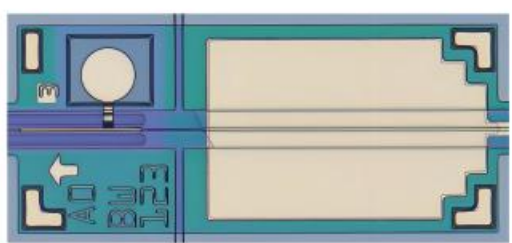
- PBS
- Prism
- Etalon



EML Series

100G EML

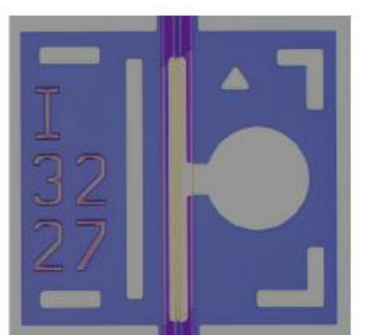
- High extinction ratio
- High modulation speed



Telecom DFB

10G DML

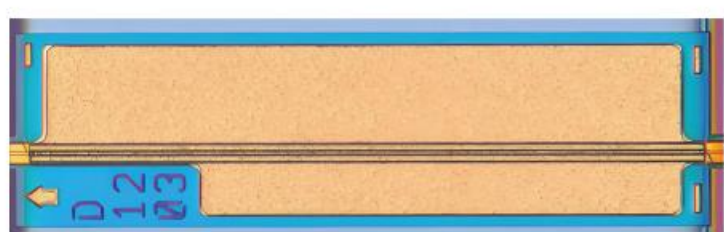
- Up to 10.5Gbps modulation
- 40°C ~85°C wide temp range



Silicon Photonics DFB

100mW CW DFB

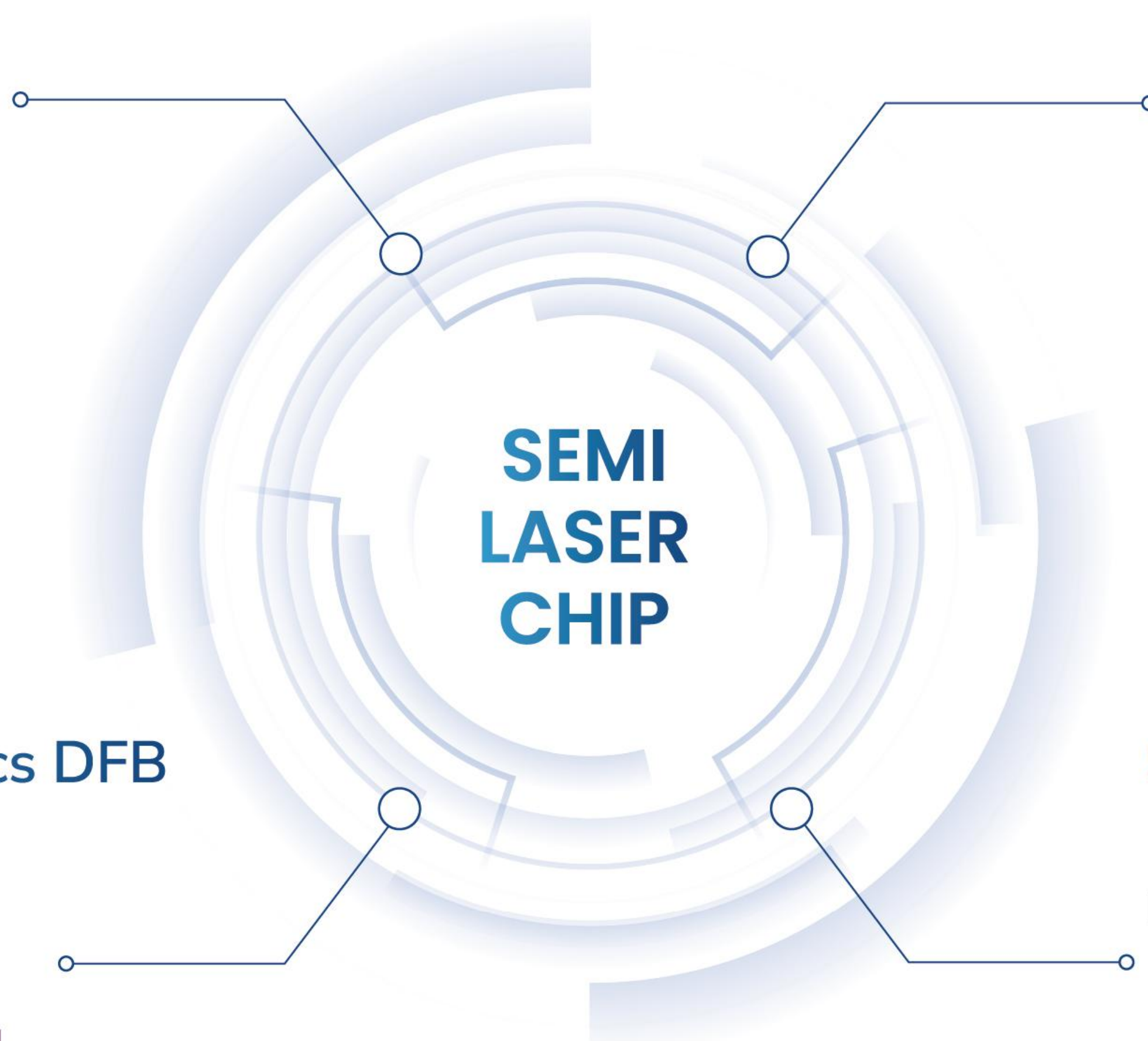
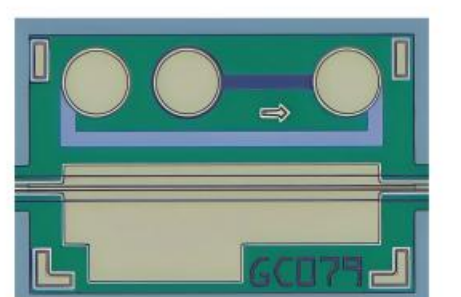
- High power
- High output efficiency



Sensing & Detection

1653TMT

- Integrated DFB/Heater/thermistor
- High output efficiency



SEMI
LASER
CHIP

EASP ENTERPRISE-LEVEL INTELLIGENT AGENT SERVICE PLATFORM

ETERN Optoelectronics launches a three-in-one enterprise solution: "Computing Power - Platform - Intelligent Agent". By building a dedicated cloud or on-premises computing power base and deploying the self-developed EASP, we help enterprises realize intelligent integration of internal knowledge and natural language interaction, driving business digital transformation to reduce costs and increase efficiency.



Core Function

- Intelligent Q&A & Assistance:**
 Conduct natural language Q&A, precise retrieval and content-assisted generation via intelligent terminals to improve office efficiency.
- Knowledge Construction & Management:**
 Provide knowledge extraction and library construction tools to support continuous organization, slicing, updating and maintenance of internal enterprise data, ensuring the accuracy and timeliness of the knowledge base.

Key Performance Indicators

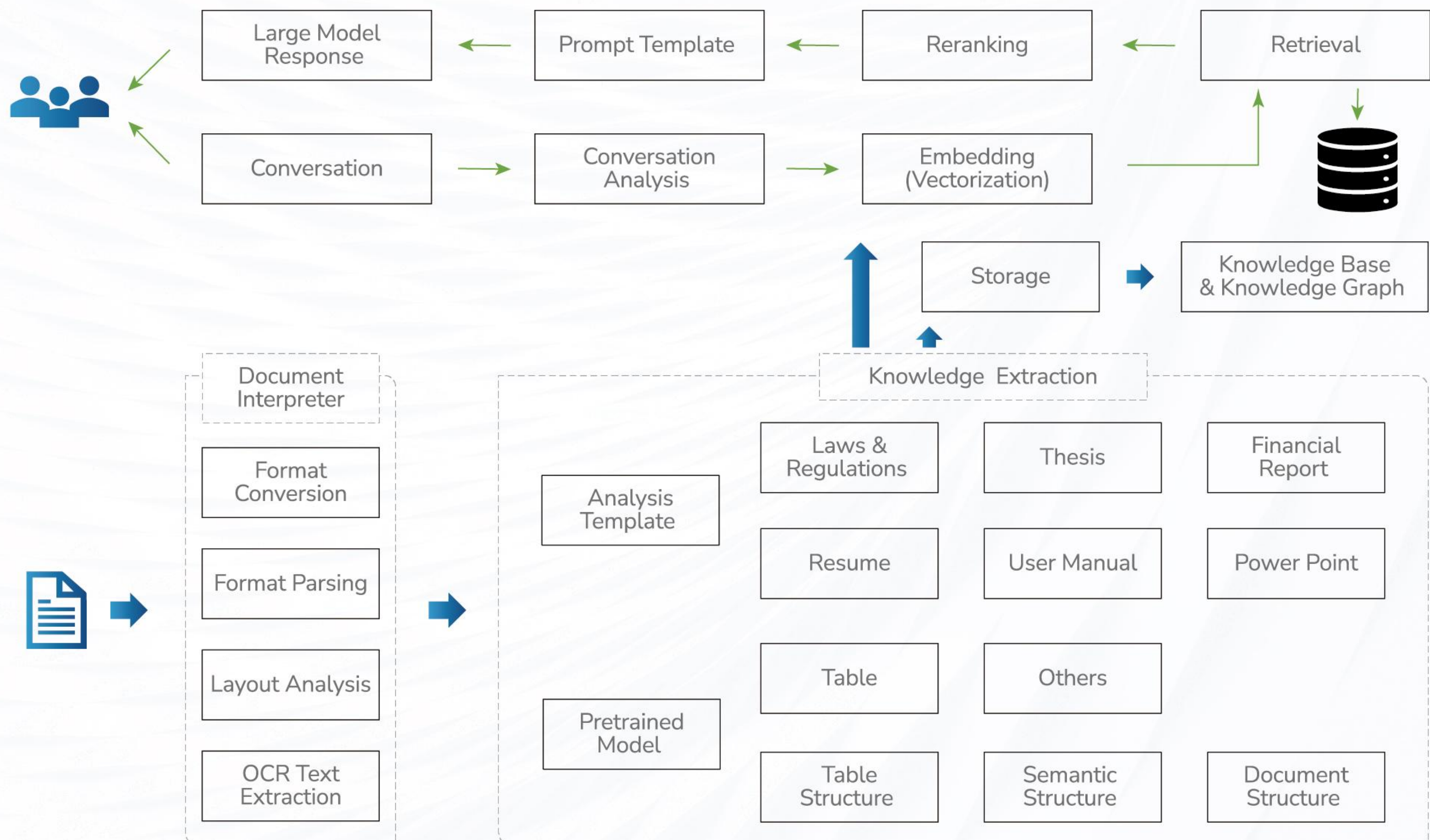
Max. single file size:
512M

Total knowledge base files:
> 100,000

Agent response time:
< 5 sec
(excluding LLM generation)

Vector search latency:
< 1 sec

Explanation Of The EASP Service Platform



ETERN Optoelectronics Global

Represented by Etern International Technology Co., Ltd.

www.szetern.com

sales@szetern.com

V1.0 · March 2026

© 2026 ETERN Optoelectronics. All rights reserved.