

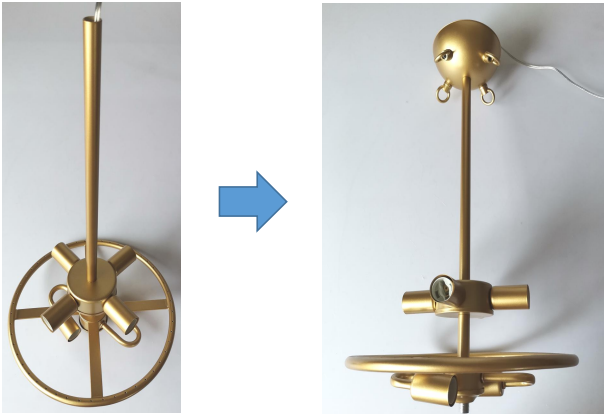
# Installation Guide

Picture 1



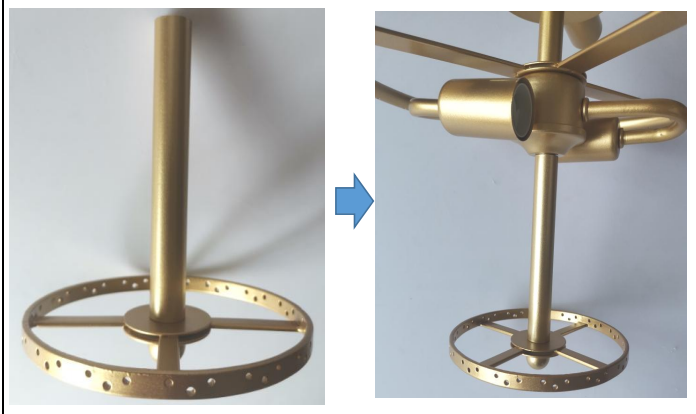
Parts List:A\*1;B\*1;C\*1;D\*1;E\*2;F\*1;G\*1;H\*4;I\*1;J\*1;K\*1; L\*1; M\*50; N\*30; O\*15; P\*1

Picture 2



Step 1:Tighten the KB connection with F.

Picture 3



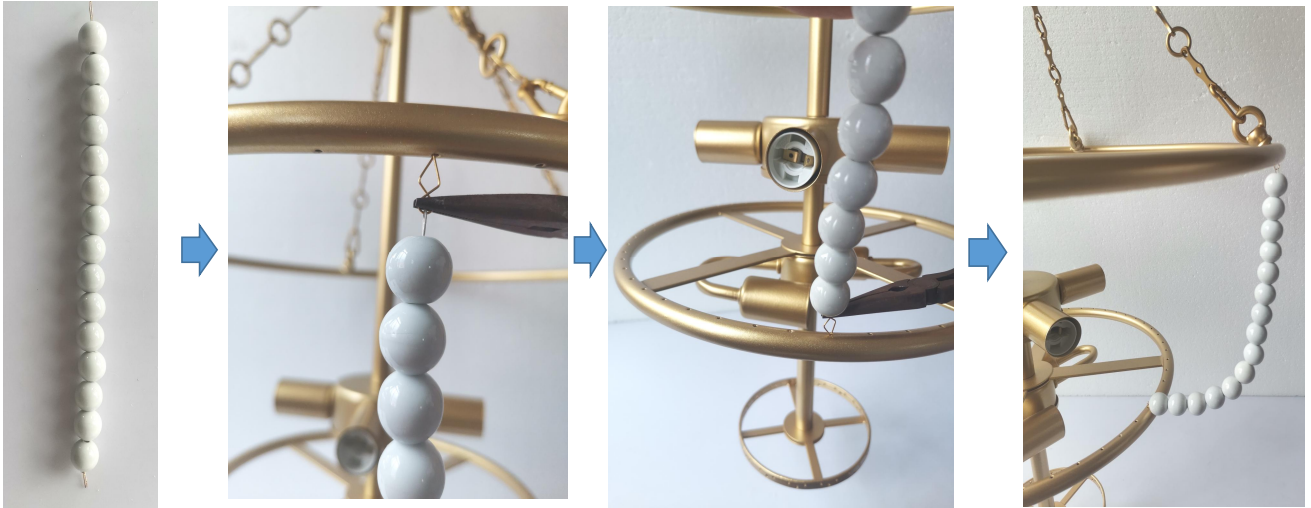
Step 2:Install J to the bottom of B with the I connection.

Picture 4



Step 3:Install it as shown.

Picture 5



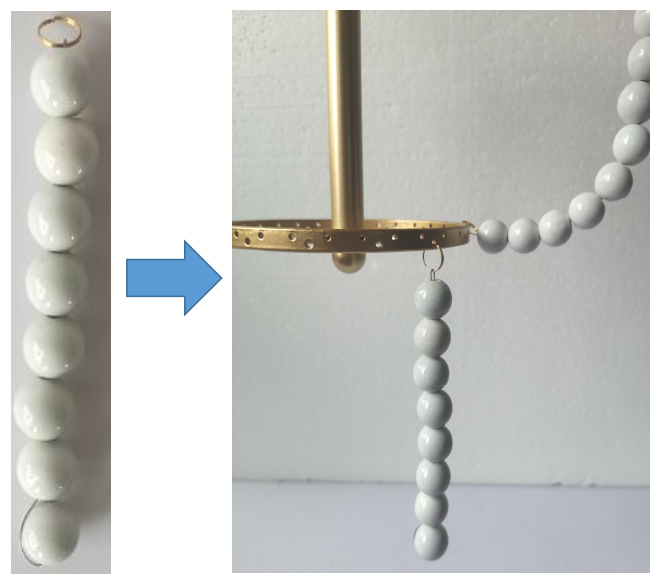
Step 4: Use the P tool to connect M between lamp bodies 1 and 2.

Picture 6



Step 5: Use the P tool to connect N between lamp bodies 2 and 3.

Picture 7



Step 6: Hang O on the lamp body J.

Picture 8



Completion.