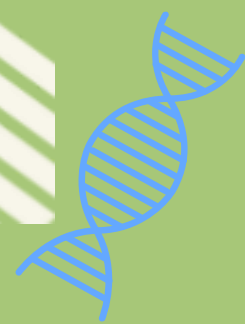


ZEPHANY

Bee Pattern



Materials Needed

The following includes all materials for the crochet kits:

Bee&Penguin&Bunny

1. 4.0/3.5 mm Crochet Hook
2. Stitch Markers
3. Needle
4. Safety Eyes
5. Stuffing
6. Crochet ring
7. Grey Beginner Crochet Yarn (1 whole skein)
8. White Beginner Crochet Yarn (1 whole skein)
9. Yellow Beginner Crochet Yarn (1 small skein)
10. Coffee Beginner Crochet Yarn (1 small skein)
11. Pink yarn (1 small skein)
12. A card with our Web

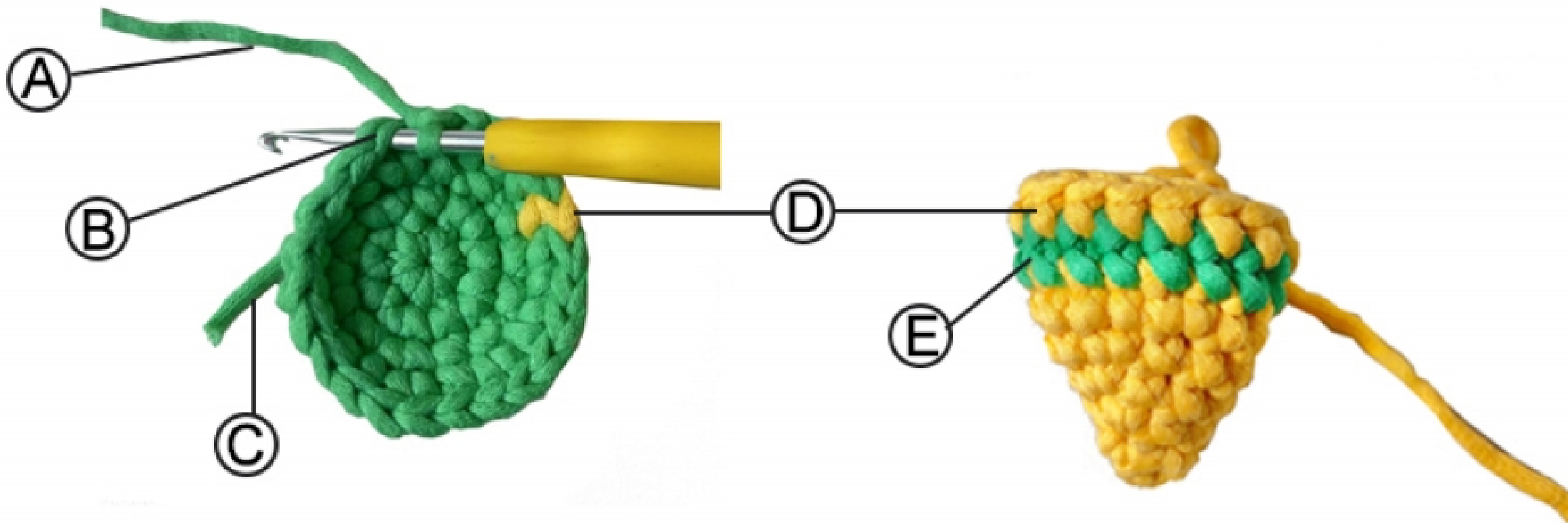
Important Note

If you have any missing parts or accessories,
please feel free to contact us at:

Help@zepiany.com



TERMINOLOGY



A Working yarn

Yarn connected to the ball of yarn

B Top loops of a stitch

Where you usually insert the hook, to start the next stitch

C Yarn tail

End of yarn not connected to the ball of yarn

D Single crochet stitch

The main stitch used in amigurumi

E Round

A series of crochet stitches in a circle. This illustrated
crochet piece is made of 4 rounds

TERMINOLOGY AND ABBREVIATIONS

SC: Single crochet

INC: Increase crochet

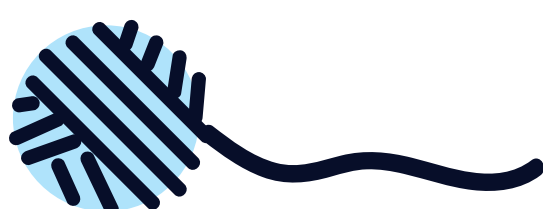
DEC: Decrease crochet

ST: Slip stitch

CH: Chain

BOL: Back of Loop

FOL: Front of Loop



Bee Pattern Instructions

IF YOU'RE NEW TO CROCHET, STARTING WITH JUST THE PATTERN MIGHT BE A BIT CHALLENGING. WE RECOMMEND THAT YOU WATCH OUR VIDEO TUTORIAL FOR STEP-BY-STEP GUIDANCE.

BODY (With Yellow Yarn)

Magic Ring (Pre-starter with 3 stitch markers)

Round1: start 6sc in a magic ring (6)

Round2: inc*6 (12)

Round3: (sc,inc)*6 (18)

Round4: (2sc,inc)*6 (24)

Round5: (3sc,inc)*6 (30)

Round6: 30sc (30)



We need to change the color with the Brown yarn from rounds 7 – 9

Rounds7-9: 30sc (30)

We need to change the color with the Yellow yarn from rounds 10 - 12

Rounds10-12: 30sc (30)

All the following rounds are crocheted with brown yarn.

Round13: 30sc (30)

Insert the eyes between Rounds 3-4, 5 stitches apart.

Round14: (3sc,dec)*6 (24)

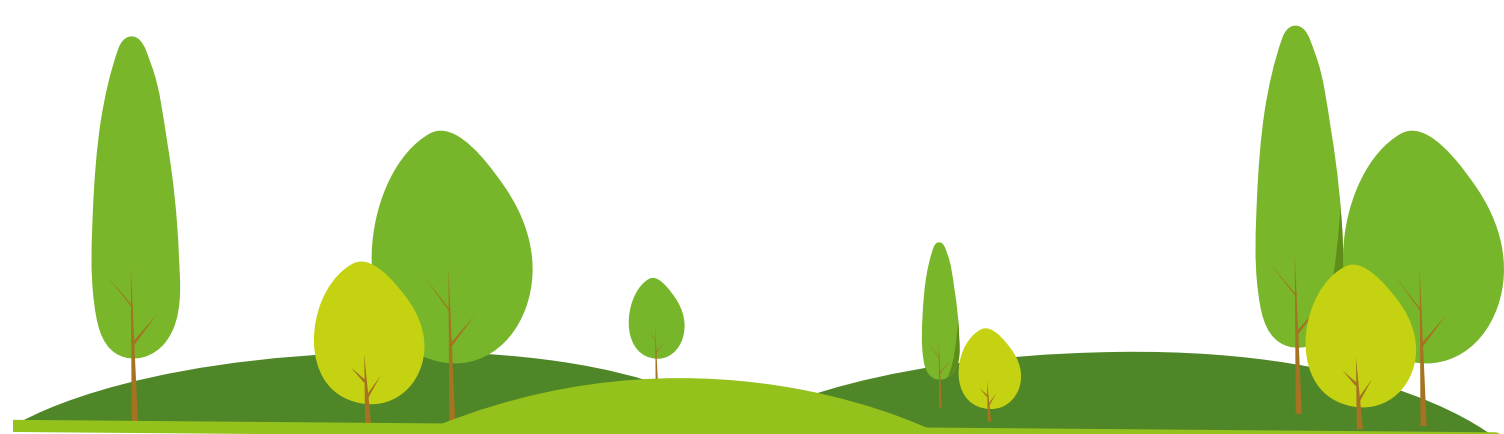
Round15: (2sc,dec)*6 (18)

Round16: (sc,dec)*6 (12)

Add Stuffing

Round17: dec*6 (6)

Fasten off



Bee Pattern Instructions

Since the sewing method is quite unique, it would be better to watch the video before proceeding.

WINGS (With White Yarn)

Creating a magic ring

Round1: 8sc in magic loop (8)

Round2: inc*8 (16)

Fasten off. Cut a 8-10 inch yarn tail.

WING SEWING

On Rounds 9-11, sew the wing in between the two eyes, 2 stitches apart, starting your stitching on round 9.

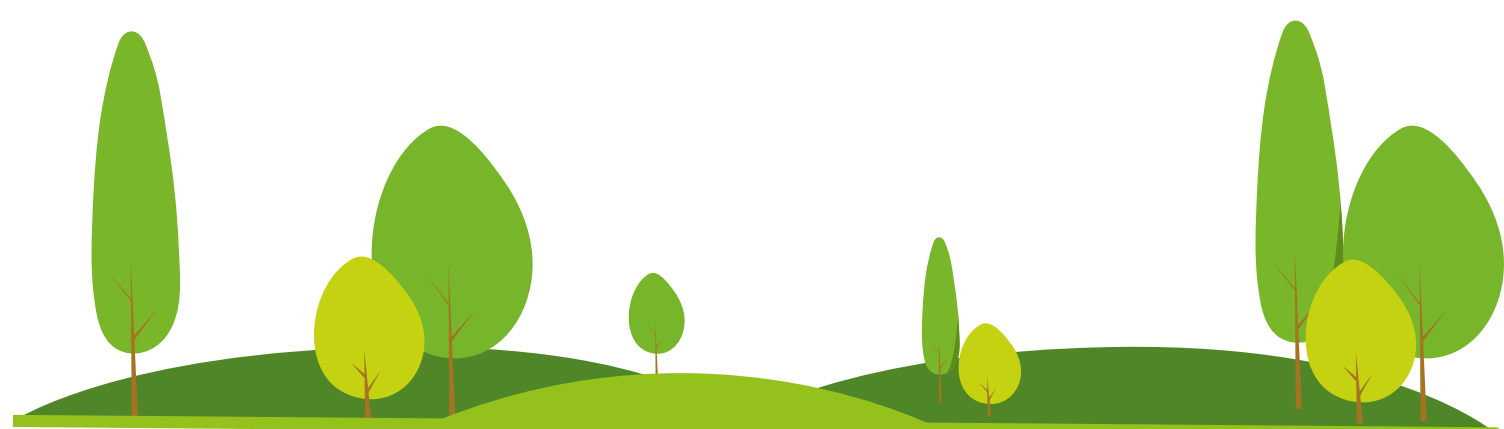
Video tutorial : [//www.youtube.com/embed/hyen32hGBH8](https://www.youtube.com/embed/hyen32hGBH8)

(Scan the QR code)



MOUTH SEWING

Sew the mouth starting from between the eyes, along the first round



Bee Pattern Instructions

That's amazing!

You've finished your ZEP IANY Bee! I hope you have a wonderful time with your creation. If you ever have any questions or need help, don't hesitate to reach out!

We'd love to hear from you!

If you enjoyed our product, we would be so grateful if you could leave us a positive review with a photo on Amazon.

As a thank-you, you'll receive a free video tutorial + chart for any one of our products!

Just send us a screenshot of your review, and let us know which product you'd like the tutorial for.

Thank you for your support - it means the world to our small business! 🧡

