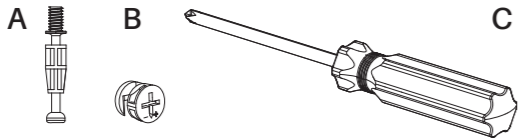


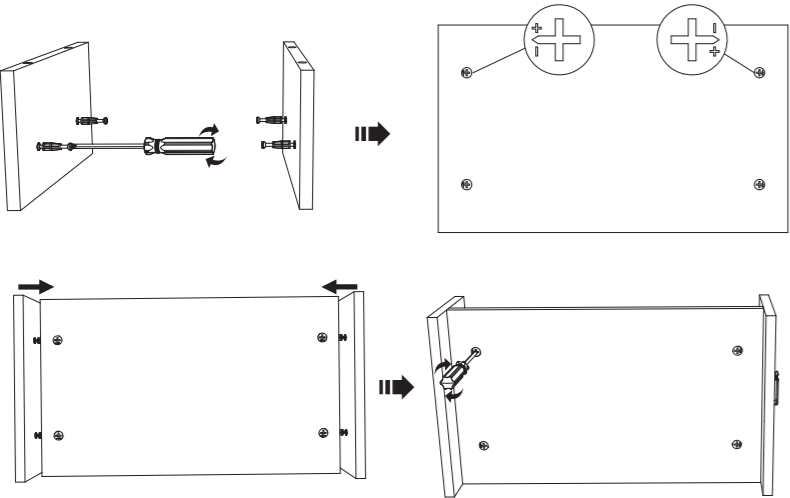
PARTS INCLUDED

- ① Surface Plate × 1
(400×235×12 mm)
- ② Middle Plate × 1
(376×235×12 mm)
- ③ Support Legs × 2
(235×130×12 mm)
- A. Cam Bolt × 8
- B. Cam Lock Nut × 8
- C. Screw Driver × 1



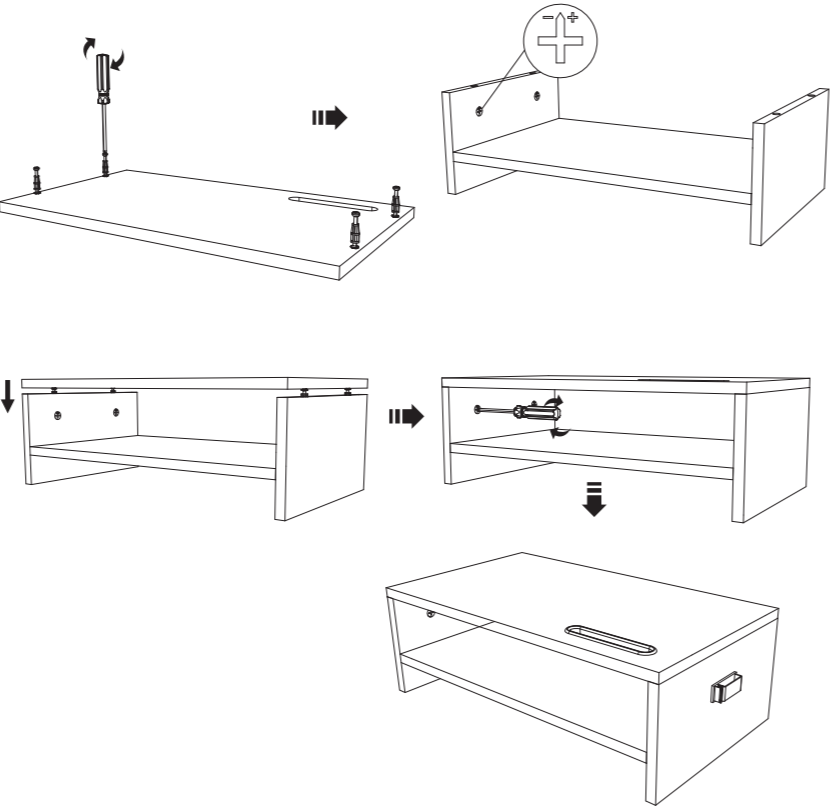
Step 1 Install the Middle Plate on Support Legs

Install and fasten the cam bolt A into 4 holes on the side of support legs. (Be sure A are seated flush with the surface of legs.)
Then put cam lock nut B into round holes on middle plate.
Finally install the middle plate on support legs and use screwdriver to thread B until it can not be turned.
* Please pay attention to direction when you put B into holes.



Step 2 Assemble the Surface Plate on Support Legs

Fasten the cam bolt A into 4 holes on surface plate. Then install the surface plate on support legs in the same way.
Finally attach phone holder slot and cable clip on suitable place.



ATUMTEK

Contact us via Facebook Messenger (Recommended):

m.me/atumtekproducts
OR
www.atumtek.com
OR
support@atumtek.com

If you find our product satisfactory,
please encourage us by sharing your user experience online.
If you need help with this purchase, please do not hesitate to contact us.

EC	REP	Prolinx GmbH Brehmstr.56, 40239 Duesseldorf Germany
----	-----	--

UK	REP	Syncwire UK Ltd C/O Lai and Co. 109 Portland Street, Manchester, M1 6N
----	-----	---

ATUMTEK

ATUMTEK 2 Tiers Wood Monitor Stand
Installation Instruction