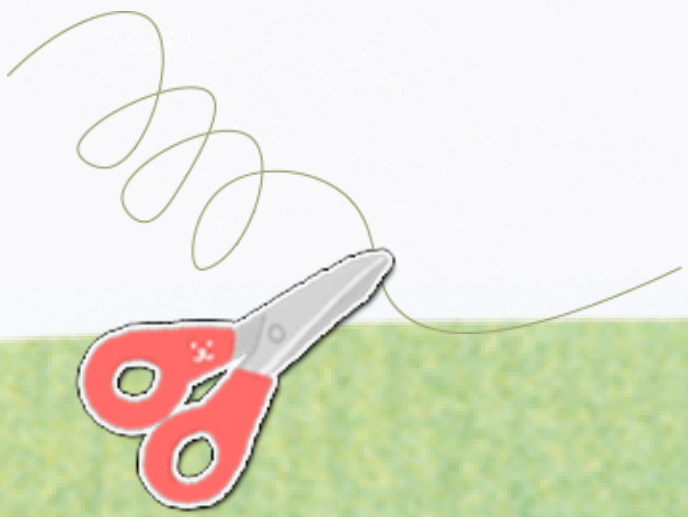


ZEP IANY

Eggshell Chick Pattern



Materials Needed

The following includes all materials for the crochet kits:

Chick, Bunny & Carrot

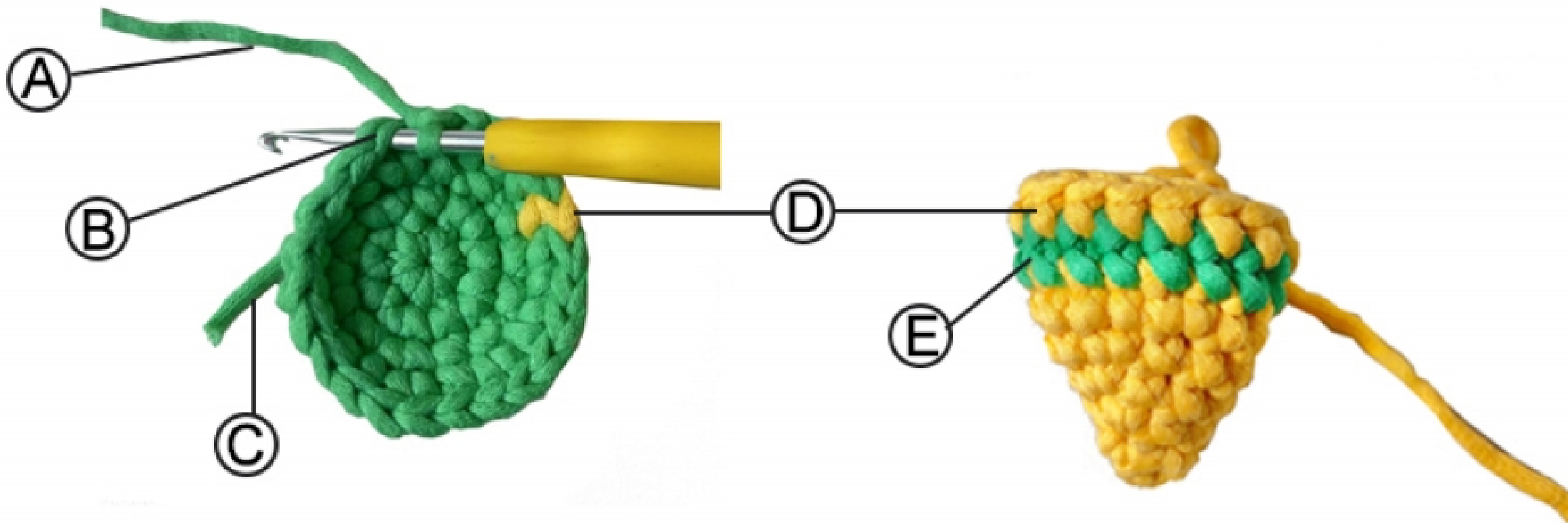
1. 4.0/3.5 mm Crochet Hook
2. Stitch Markers
3. Needle
4. Safety Eyes
5. Stuffing
6. Crochet ring
7. White Beginner Crochet Yarn (1 whole skein)
8. Yellow Beginner Crochet Yarn (1 whole skein)
9. Green & white & orange & black Beginner Crochet Yarn (One small group each)
10. Pink Yarn (1 small skeins)
11. A card with our Web

Important Note:

If you have any missing parts or accessories, please feel free to contact us at:

Help@zepiany.com

TERMINOLOGY



A Working yarn

Yarn connected to the ball of yarn

B Top loops of a stitch

Where you usually insert the hook, to start the next stitch

C Yarn tail

End of yarn not connected to the ball of yarn

D Single crochet stitch

The main stitch used in amigurumi

E Round

A series of crochet stitches in a circle. This illustrated
crochet piece is made of 4 rounds

TERMINOLOGY AND ABBREVIATIONS

SC: Single crochet

INC: Increase crochet

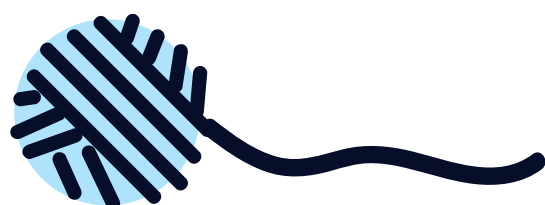
DEC: Decrease crochet

ST: Slip stitch

CH: Chain

BOL: Back of Loop

FOL: Front of Loop



eggshel chick Pattern Instructions

IF YOU'RE NEW TO CROCHET, STARTING WITH JUST THE PATTERN MIGHT BE A BIT CHALLENGING. WE RECOMMEND THAT YOU WATCH OUR VIDEO TUTORIAL FOR STEP-BY-STEP GUIDANCE.

BODY (With Yellow Yarn)

Magic Ring(Pre-starter with 3 stitch markers)

Round1: start 6sc in a magic ring (6)

Round2: inc*6 (12)

Round3: (sc,inc)*6 (18)

Round4: (2sc,inc)*6 (24)

Round5: 24sc (24)

Round6: (5sc,inc)*4 (28)

Rounds7-9: 28sc (28)

Round10: (6sc,inc)*4 (32)



Insert the eyes between Round 7-8, 5 stitches apart.

Rounds11-12: 32sc (32)

Round13: (2sc,dec)*8 (24)

Round14: 24sc (24)

Round15: (sc,dec)*8(16)

Round16: 16sc(16)

Add Stuffing

Round17: dec*8 (8)

Fasten off



eggshel chick Pattern Instructions

Since the sewing method is quite unique, it would be better to watch the video before proceeding.

BEAK (With Orange Yarn)

Creating a magic ring

Round 1: 4sc in magic loop (4)

Round 2: (sc,inc)*2 (6)

Turn the work right side up. Fasten off. Cut a 8-10 inch yarn tail.

BEAK SEWING

On rounds 9-10, sew the beak in between the two eyes, starting your stitching on round 9.

WINGS (With Yellow Yarn)

Creating a magic ring

Round 1: 4sc in magic loop (4)

Round 2: inc*4 (8)

Round 3: 8sc (8)

Fasten off. Cut a 8-10 inch yarn tail. Join the sides together

WING SEWING

On rounds 10-11, both sides of the body



eggshell chick Pattern Instructions

GRASS(With Green Yarn)

ch6, 2sc in 2nd ch from hook, slst in BOL of 4th ch from hook,
ch3, 2sc in 2nd ch from hook, slst in FOL of 4th ch from hook,
slst in 5th ch from hook.slst in 6th ch from hook.

EGGSHELL(With White Yarn)

Magic Ring(Pre-starter with 3 stitch markers)

Round1: start 6sc in a magic ring (6)
Round2: inc*6 (12)
Round3: (sc,inc)*6 (18)
Round4: (2sc,inc)*6 (24)
Round5: 24sc (24)
Round6: (3sc,inc)*6 (30)
Round7: (4sc,inc)*6 (36)
Round8: 36sc (36)
Round9: slst,(sc,dc,2ch,dc,sc,slst)*7



eggshel chick Pattern Instructions

That's fantastic!

You've completed your ZEPHANY eggshell chick! I hope you have a great time enjoying your creation. If you have any questions or need assistance, feel free to reach out anytime!

We'd love to hear from you!

If you enjoyed our product, we would be so grateful if you could leave us a positive review with a photo on Amazon.

As a thank-you, you'll receive a free video tutorial + chart for any one of our products!

Just send us a screenshot of your review, and let us know which product you'd like the tutorial for.

Thank you for your support — it means the world to our small business! 🧡

